

# Tuscany

2616.60 - 2616.69



Producto

**Revestimiento mural**

Peso

**± 161 gr/m<sup>2</sup>, ± 7 oz/yd<sup>1</sup>**

Descripción

**Aspecto de papel con sutiles efectos metalizados**

Combustión retardada

**EN 13501 , B, s2 - d0  
ASTM E84 , Pass, A**

Composición

**70% pulpa de madera / 30% poliéster en soporte de papel**

Etiquetas



Anchura

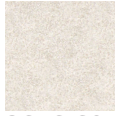
**± 137 cm, ± 54 inches**



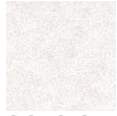
# Tuscany

2616.60 - 2616.69

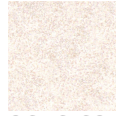
---



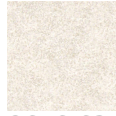
2616.60



2616.61



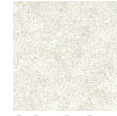
2616.62



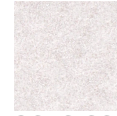
2616.63



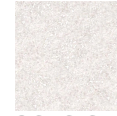
2616.64



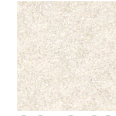
2616.65



2616.66



2616.67



2616.68



2616.69