

# Tula

8081.01 - 8081.16



## Product

### Gordijnstoffen

## Omschrijving

**Subtiel gekleurde melange structuur in een droge, wollige look en feel**

## Samenstelling

**60% recycled polyester FR / 40% polyester FR**

## Breedte

**± 149 cm, ± 59 inches**

## Gewicht

**± 395 gr/m, ± 13 oz/yd<sup>1</sup>**

## Geluidsabsorptie

**ISO 354, alpha w**

0.75 (pleated)

## Visueel & Thermisch comfort

**EN 410/EN 14501**

Test available

## Brandwerendheid

**NFPA 701 (meth. 1 or 2) , Pass**

**EN 13773 , Class 1**

**BS 5867-2 , Type C**

**NF P 92/503-507 , M1**

**DIN 4102 , B1**

**Übereinstimmung , Pass**

**UNI VF 8456-8457 , Classe 1**

**CAN/ULC S109 , Pass**

**IMO 2010 FTP part 7 , Pass**

## Wrijftechtheid

**ISO 105-X12**

wet 4-5 (scale 1-5) / dry 4-5 (scale 1-5)

**AATCC 8 (solids)**

wet 5 (scale 1-5) / dry 5 (scale 1-5)

## Lichtechtheid

**ISO 105-B02**

6 (scale 1-8)

**AATCC 16.2 option 1 or 16.3 opt 3**

5 (scale 1-5)

## Naadschuifweerstand

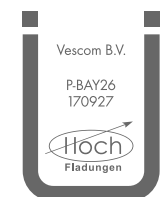
**ISO 13936-2**

warp 3 mm / weft 4.7 mm

**ASTM D434**

warp 49 lbs / weft 51 lbs

## Keurmerken



Baustoffklasse schwerentflammbar  
DIN 4102, B1

Reiniging & Onderhoud



# Tula

Kilim

Shrinkage 7.0% / warping 2.8% / weft -1.6%



8081.01



8081.02



8081.03



8081.04



8081.05



8081.06



8081.07



8081.08



8081.09



8081.10



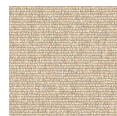
8081.11



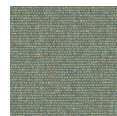
8081.12



8081.13



8081.14



8081.15



8081.16