

Tula

8081.01 - 8081.16



Produit

Tissus pour rideaux

Description

Structure subtile de couleur mélangée donnant la sensation d'une laine

Composition

60% recycled polyester FR / 40% polyester FR

Largeur

± 149 cm, ± 59 inches

Poids

± 395 gr/m, ± 13 oz/yd¹

Absorption acoustique

ISO 354, alpha w

0.75 (pleated)

Confort Visuel & Thermique

EN 410/EN 14501

Test available

Non feu

NFPA 701 (meth. 1 or 2) , Pass

EN 13773 , Class 1

BS 5867-2 , Type C

NF P 92/503-507 , M1

DIN 4102 , B1

Übereinstimmung , Pass

UNI VF 8456-8457 , Classe 1

CAN/ULC S109 , Pass

IMO 2010 FTP part 7 , Pass

Résistance au frottement

ISO 105-X12

wet 4-5 (scale 1-5) / dry 4-5 (scale 1-5)

AATCC 8 (solids)

wet 5 (scale 1-5) / dry 5 (scale 1-5)

Solidité lumière

ISO 105-B02

6 (scale 1-8)

AATCC 16.2 option 1 or 16.3 opt 3

5 (scale 1-5)

Résistance au glissement à la couture

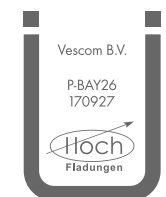
ISO 13936-2

warp 3 mm / weft 4.7 mm

ASTM D434

warp 49 lbs / weft 51 lbs

Étiquettes



Baustoffklasse schwerentflammbar
DIN 4102, B1

Entretien & Maintenance



Tula

Retro Usienent

Shrinkage 7.0% warp 2.8% / weft -1.6%



8081.01



8081.02



8081.03



8081.04



8081.05



8081.06



8081.07



8081.08



8081.09



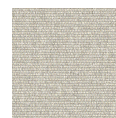
8081.10



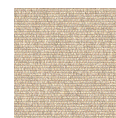
8081.11



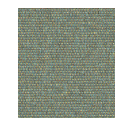
8081.12



8081.13



8081.14



8081.15



8081.16