

# Tula

8081.01 - 8081.16



Product  
**Curtain**

Description  
**Subtle coloured melange structure in a dry wooly look and feel**

Composition  
**60% recycled polyester FR / 40% polyester FR**

Width  
**± 149 cm, ± 59 inches**

Weight  
**± 395 gr/m, ± 13 oz/yd<sup>1</sup>**

Sound absorption  
**ISO 354, alpha w**  
0.75 (pleated)

Visual & Thermal comfort  
**EN 410/EN 14501**  
Test available

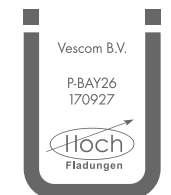
Flame retardancy  
**NFPA 701 (meth. 1 or 2) , Pass**  
**EN 13773 , Class 1**  
**BS 5867-2 , Type C**  
**NF P 92/503-507 , M1**  
**DIN 4102 , B1**  
**Übereinstimmung , Pass**  
**UNI VF 8456-8457 , Classe 1**  
**CAN/ULC S109 , Pass**  
**IMO 2010 FTP part 7 , Pass**

Colorfastness to crocking  
**ISO 105-X12**  
wet 4-5 (scale 1-5) / dry 4-5 (scale 1-5)  
**AATCC 8 (solids)**  
wet 5 (scale 1-5) / dry 5 (scale 1-5)

Colorfastness to light  
**ISO 105-B02**  
6 (scale 1-8)  
**AATCC 16.2 option 1 or 16.3 opt 3**  
5 (scale 1-5)

Seam slippage  
**ISO 13936-2**  
warp 3 mm / weft 4.7 mm  
**ASTM D434**  
warp 49 lbs / weft 51 lbs

Labels



Baustoffklasse schwerentflammbar  
DIN 4102, B1

Care & Maintenance



# Tula

Shrinkage

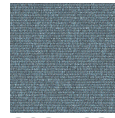
8081.01 - 8081.16  
length 7.0% / width 2.8% / weight -1.6%



8081.01



8081.02



8081.03



8081.04



8081.05



8081.06



8081.07



8081.08



8081.09



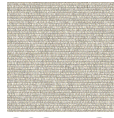
8081.10



8081.11



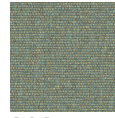
8081.12



8081.13



8081.14



8081.15



8081.16