

# Tula

8081.01 - 8081.16



product  
**Curtain**

description  
**Subtle coloured melange structure in a dry wooly look and feel**

composition  
**60% recycled polyester FR / 40% polyester FR**

width  
**± 149 cm, ± 59 inches**

weight  
**± 395 gr/m<sup>2</sup>, ± 13 oz/yd<sup>1</sup>**

sound absorption  
**ISO 354, alpha w**  
0.75 (pleated)

visual & thermal comfort  
**EN 410/EN 14501**  
Test available

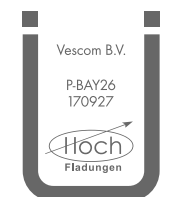
flame retardant  
**NFPA 701 (meth. 1 or 2) , Pass**  
**EN 13773 , Class 1**  
**BS 5867-2 , Type C**  
**NF P 92/503-507 , M1**  
**DIN 4102 , B1**  
**Übereinstimmung , Pass**  
**UNI VF 8456-8457 , Classe 1**  
**CAN/ULC S109 , Pass**  
**IMO 2010 FTP part 7 , Pass**

colorfastness crocking  
**ISO 105-X12**  
wet 4-5 (scale 1-5) / dry 4-5 (scale 1-5)  
**AATCC 8 (solids)**  
wet 5 (scale 1-5) / dry 5 (scale 1-5)

colorfastness to light  
**ISO 105-B02**  
6 (scale 1-8)  
**AATCC 16.2 option 1 or 16.3 opt 3**  
5 (scale 1-5)

seam slippage  
**ISO 13936-2**  
warp 3 mm / weft 4.7 mm  
**ASTM D434**  
warp 49 lbs / weft 51 lbs

labels



Baustoffklasse schwerentflammbar  
DIN 4102, B1

care



# Tula

Shrinkage 70° - warp 2%  
Shrinkage 70° - weft -1.6%



8081.01



8081.02



8081.03



8081.04



8081.05



8081.06



8081.07



8081.08



8081.09



8081.10



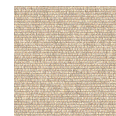
8081.11



8081.12



8081.13



8081.14



8081.15



8081.16