

# Toby

8088.01 - 8088.12



产品  
窗帘

## 描述

由85%的再生塑料废物制成的不规则哑光宽幅织物窗帘织物

## 成分

85% recycled polyester FR / 15% polyester FR

## 宽幅

± 307 cm, ± 121 inches

## 重量

± 491 gr/m, ± 16 oz/yd<sup>1</sup>

## 视觉及热舒适控制

EN 410/EN 14501

Test available

## 阻燃

NFPA 701 (meth. 1 or 2), Pass

EN 13773, Class 1

BS 5867-2, Type C

NF P 92/503-507, M1

DIN 4102, B1

Übereinstimmung, Pass

UNI VF 8456-8457, Classe 1

CAN/ULC S109, Pass

IMO 2010 FTP part 7, Pass

## 耐摩擦褪色

ISO 105-X12

wet 4-5 (scale 1-5) / dry 4-5 (scale 1-5)

AATCC 8 (solids)

wet 5 (scale 1-5) / dry 5 (scale 1-5)

## 耐光照褪色

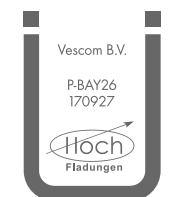
ISO 105-B02

6 (scale 1-8)

AATCC 16.2 option 1 or 16.3 opt 3

5 (scale 1-5)

## 标签



Baustoffklasse schwerentflammbar  
DIN 4102, B1

## 保养与维护



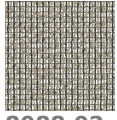
## 收缩率

Shrinkage 70° warp -2.6% / weft -1%

# Toby

8088.01 - 8088.12

---



8088.02



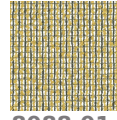
8088.03



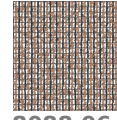
8088.04



8088.05



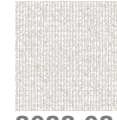
8088.01



8088.06



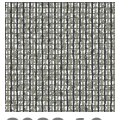
8088.07



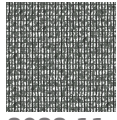
8088.08



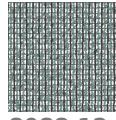
8088.09



8088.10



8088.11



8088.12