

# Toby

8088.01 - 8088.12



## Produto

**Cortina**

## Descrição

**Tecido para cortina, fosco irregular, natural, do chão ao teto, tecido com um fio bouclé feito de 85 % de resíduos plásticos reciclados**

## Composição

**85% recycled polyester FR / 15% polyester FR**

## Largura

**± 307 cm, ± 121 inches**

## Peso

**± 491 gr/m, ± 16 oz/yd<sup>1</sup>**

## Conforto Visual & Térmico

**EN 410/EN 14501**

Test available

## Resistência ao fogo

**NFPA 701 (meth. 1 or 2) , Pass**

**EN 13773 , Class 1**

**BS 5867-2 , Type C**

**NF P 92/503-507 , M1**

**DIN 4102 , B1**

**Übereinstimmung , Pass**

**UNI VF 8456-8457 , Classe 1**

**CAN/ULC S109 , Pass**

**IMO 2010 FTP part 7 , Pass**

## Resistência à fricção

**ISO 105-X12**

wet 4-5 (scale 1-5) / dry 4-5 (scale 1-5)

**AATCC 8 (solids)**

wet 5 (scale 1-5) / dry 5 (scale 1-5)

## Resistência à luz

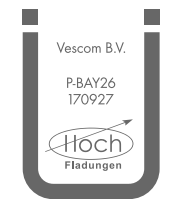
**ISO 105-B02**

6 (scale 1-8)

**AATCC 16.2 option 1 or 16.3 opt 3**

5 (scale 1-5)

## Marcas de qualidade



Baustoffklasse schwerentflammbar  
DIN 4102, B1

## Cuidados & Manutenção



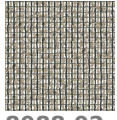
## Encolhimento

Shrinkage 70° warp -2.6% / weft -1%

# Toby

8088.01 - 8088.12

---



8088.02



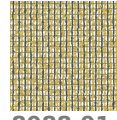
8088.03



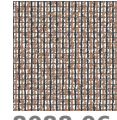
8088.04



8088.05



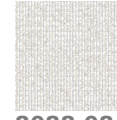
8088.01



8088.06



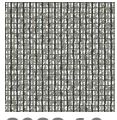
8088.07



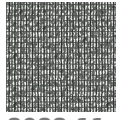
8088.08



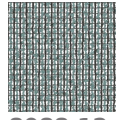
8088.09



8088.10



8088.11



8088.12