

Toby

8088.01 - 8088.12



Product

Gordijnstoffen

Omschrijving

Kamerhoge natuurlijke, onregelmatige matte gordijnstof geweven met een bouclé garen gemaakt van 85% gerecycled plastic afval

Samenstelling

85% recycled polyester FR / 15% polyester FR

Breedte

± 307 cm, ± 121 inches

Gewicht

± 491 gr/m, ± 16 oz/yd¹

Visueel & Thermisch comfort

EN 410/EN 14501

Test available

Brandwerendheid

NFPA 701 (meth. 1 or 2) , Pass

EN 13773 , Class 1

BS 5867-2 , Type C

NF P 92/503-507 , M1

DIN 4102 , B1

Übereinstimmung , Pass

UNI VF 8456-8457 , Classe 1

CAN/ULC S109 , Pass

IMO 2010 FTP part 7 , Pass

Wrijfechtheid

ISO 105-X12

wet 4-5 (scale 1-5) / dry 4-5 (scale 1-5)

AATCC 8 (solids)

wet 5 (scale 1-5) / dry 5 (scale 1-5)

Lichtechtheid

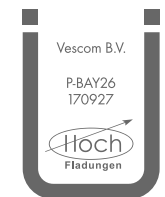
ISO 105-B02

6 (scale 1-8)

AATCC 16.2 option 1 or 16.3 opt 3

5 (scale 1-5)

Keurmerken



Baustoffklasse schwerentflammbar
DIN 4102, B1

Reiniging & Onderhoud

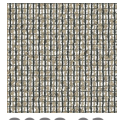


Krimp

Shrinkage 70° warp -2.6% / weft -1%

Toby

8088.01 - 8088.12



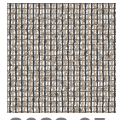
8088.02



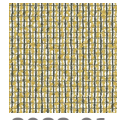
8088.03



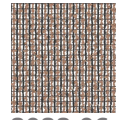
8088.04



8088.05



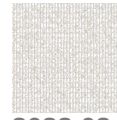
8088.01



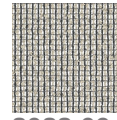
8088.06



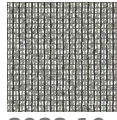
8088.07



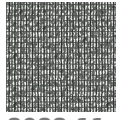
8088.08



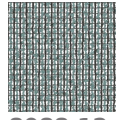
8088.09



8088.10



8088.11



8088.12