

Toby

8088.01 - 8088.12



Product
Curtain

Description
Floor-to-ceiling natural, irregular matte curtain fabric woven with a bouclé yarn made of 85% recycled plastic waste

Composition
85% recycled polyester FR / 15% polyester FR

Width
± 307 cm, ± 121 inches

Weight
± 491 gr/m, ± 16 oz/yd¹

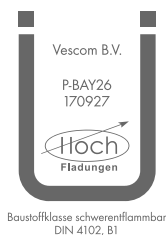
Visual & Thermal comfort
EN 410/EN 14501
Test available

Flame retardancy
NFPA 701 (meth. 1 or 2) , Pass
EN 13773 , Class 1
BS 5867-2 , Type C
NF P 92/503-507 , M1
DIN 4102 , B1
Übereinstimmung , Pass
UNI VF 8456-8457 , Classe 1
CAN/ULC S109 , Pass
IMO 2010 FTP part 7 , Pass

Colorfastness to crocking
ISO 105-X12
wet 4-5 (scale 1-5) / dry 4-5 (scale 1-5)
AATCC 8 (solids)
wet 5 (scale 1-5) / dry 5 (scale 1-5)

Colorfastness to light
ISO 105-B02
6 (scale 1-8)
AATCC 16.2 option 1 or 16.3 opt 3
5 (scale 1-5)

Labels



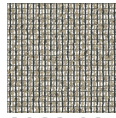
Care & Maintenance



Shrinkage
Shrinkage 70° warp -2.6% / weft -1%

Toby

8088.01 - 8088.12



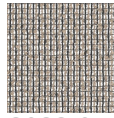
8088.02



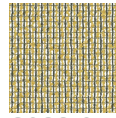
8088.03



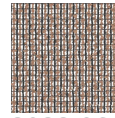
8088.04



8088.05



8088.01



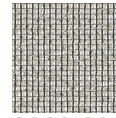
8088.06



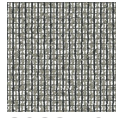
8088.07



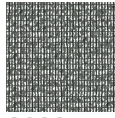
8088.08



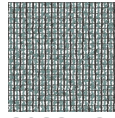
8088.09



8088.10



8088.11



8088.12