

Toby

8088.01 - 8088.12



product
Curtain

description
Floor-to-ceiling natural, irregular matte curtain fabric woven with a bouclé yarn made of 85% recycled plastic waste

composition
85% recycled polyester FR / 15% polyester FR

width
± 307 cm, ± 121 inches

weight
± 491 gr/m², ± 16 oz/yd¹

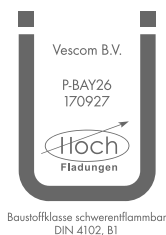
visual & thermal comfort
EN 410/EN 14501
Test available

flame retardant
NFPA 701 (meth. 1 or 2) , Pass
EN 13773 , Class 1
BS 5867-2 , Type C
NF P 92/503-507 , M1
DIN 4102 , B1
Übereinstimmung , Pass
UNI VF 8456-8457 , Classe 1
CAN/ULC S109 , Pass
IMO 2010 FTP part 7 , Pass

colorfastness crocking
ISO 105-X12
wet 4-5 (scale 1-5) / dry 4-5 (scale 1-5)
AATCC 8 (solids)
wet 5 (scale 1-5) / dry 5 (scale 1-5)

colorfastness to light
ISO 105-B02
6 (scale 1-8)
AATCC 16.2 option 1 or 16.3 opt 3
5 (scale 1-5)

labels



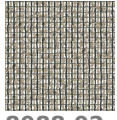
care



Shrinkage
Shrinkage 70° - warp -2.6%
Shrinkage 70° - weft -1%

Toby

8088.01 - 8088.12



8088.02



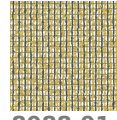
8088.03



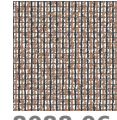
8088.04



8088.05



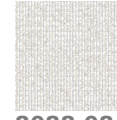
8088.01



8088.06



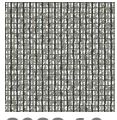
8088.07



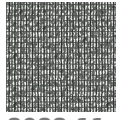
8088.08



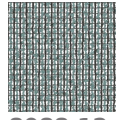
8088.09



8088.10



8088.11



8088.12