

Terral

2617.40 - 2617.49



Produto

Revestimento mural

Peso

± 263 gr/m², ± 12 oz/yd¹

Descrição

Suporte horizontal fino com fibras de sisal uniforme, metálico

Resistência ao fogo

**EN 13501 , B, s2 - d0
ASTM E84 , Pass, A**

Composição

70% popa de madeira / 20% poliéster / 10% sisal sobre um suporte em papel

Marcas de qualidade



Largura

± 137 cm, ± 54 inches



Terral

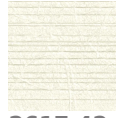
2617.40 - 2617.49



2617.40



2617.41



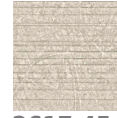
2617.42



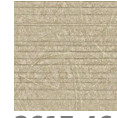
2617.43



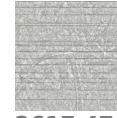
2617.44



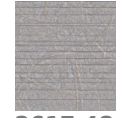
2617.45



2617.46



2617.47



2617.48



2617.49