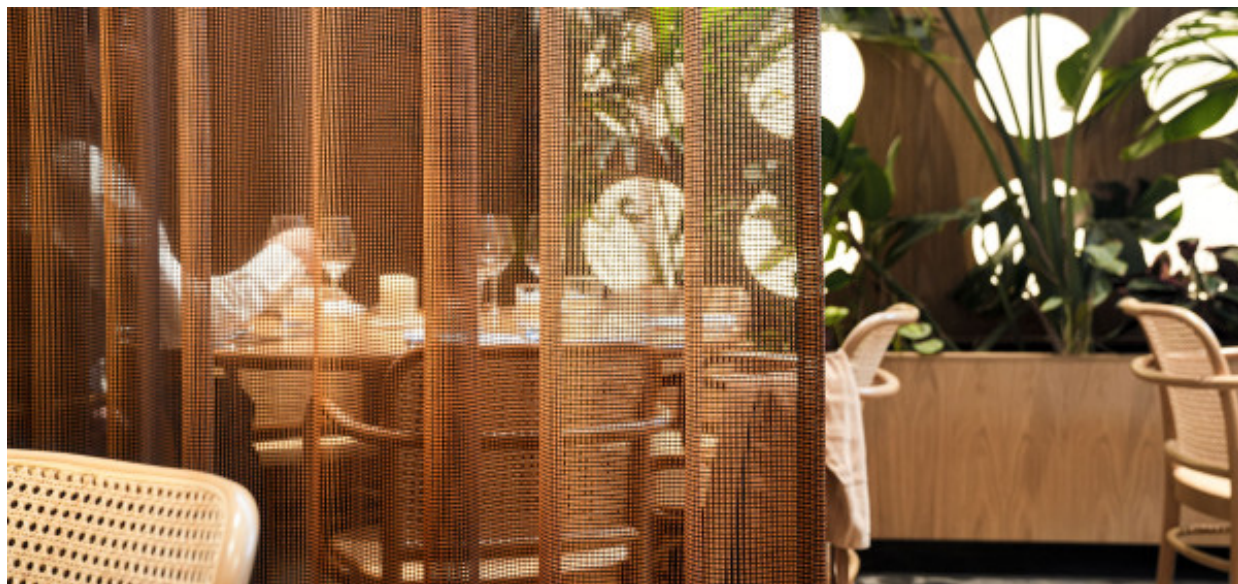


Teon

8085.01 - 8085.12



产品
窗帘

描述
粗犷开放网格结构的柔软双色调窗帘织物

成分
100% polyester FR

宽幅
± 306 cm, ± 121 inches

重量
± 214 gr/m², ± 7 oz/yd¹

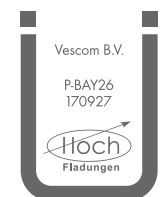
视觉及热舒适控制
EN 410/EN 14501
Test available

阻燃
NFPA 701 (meth. 1 or 2) , Pass
EN 13773 , Class 1
BS 5867-2 , Type C
NF P 92/503-507 , M1
DIN 4102 , B1
Übereinstimmung , Pass
UNI VF 8456-8457 , Classe 1
CAN/ULC S109 , Pass
IMO 2010 FTP part 7 , Pass

耐摩擦褪色
ISO 105-X12
wet 5 (scale 1-5) / dry 5 (scale 1-5)
AATCC 8 (solids)
wet 4.5 (scale 1-5) / dry 4.5 (scale 1-5)

耐光照褪色
ISO 105-B02
6 (scale 1-8)
AATCC 16.2 option 1 or 16.3 opt 3
4.5 (scale 1-5)

标签



Baustoffklasse schwerentflammbar
DIN 4102, B1

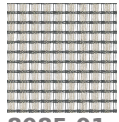
保养与维护



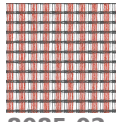
收缩率
Shrinkage 30° warp -2.6% / weft -1%

Teon

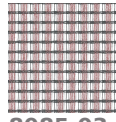
8085.01 - 8085.12



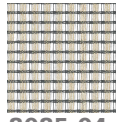
8085.01



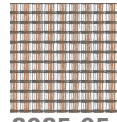
8085.02



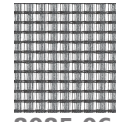
8085.03



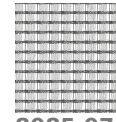
8085.04



8085.05



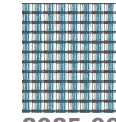
8085.06



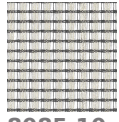
8085.07



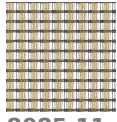
8085.08



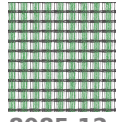
8085.09



8085.10



8085.11



8085.12