

# Tavira

8009.01 - 8009.16



## Product

**Gordijnstoffen**

## Omschrijving

**Dim out, tweed-achtige uitstraling**

## Samenstelling

**100% brandvertragend polyester**

## Breedte

**± 300 cm, ± 118 inches**

## Gewicht

**± 906 gr/m, ± 29 oz/yd<sup>1</sup>**

## Visueel & Thermisch comfort

**EN 410/EN 14501**

Test available

**AATCC 148**

Test available

## Brandwerendheid

**NFPA 701 (meth. 1 or 2) , Pass**

**EN 13773 , Class 1**

**BS 5867-2 , Type B**

**NF P 92/503-507 , M1**

**DIN 4102 , B1**

**Übereinstimmung , Pass**

**UNI VF 8456-8457 , Classe 1**

**CAN/ULC S109 , Pass**

**IMO 2010 FTP part 7 , Pass**

## Wrijfechtheid

**AATCC 8 (solids)**

wet 5 (scale 1-5) / dry 4-5 (scale 1-5)

## Lichtechtheid

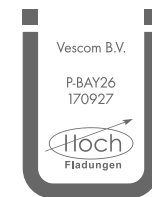
**ISO 105-B02**

6 (scale 1-8)

**AATCC 16.2 option 1 or 16.3 opt 3**

4 (scale 1-5)

## Keurmerken



Baustoffklasse schwerentflammbar  
DIN 4102, B1

## Reiniging & Onderhoud



## Krimp

Shrinkage 30° warp -1.5% / weft -0.5%

Shrinkage 70° warp -2.0% / weft -0.5%

# Tavira

8009.01 - 8009.16

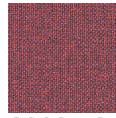
---



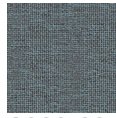
8009.01



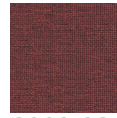
8009.11



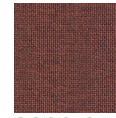
8009.10



8009.09



8009.08



8009.07



8009.06



8009.05



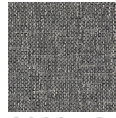
8009.04



8009.03



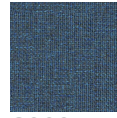
8009.02



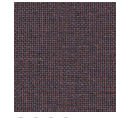
8009.12



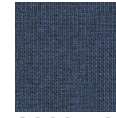
8009.13



8009.14



8009.15



8009.16