

Tavira

8009.01 - 8009.16



Prodotto

Tessuti per tende

Descrizione

Dim out, aspetto tipo tweed

Composizione

100% poliestere con trattamento antifiamma

Larghezza

± 300 cm, ± 118 inches

Peso

± 906 gr/m, ± 29 oz/yd¹

Comfort Visivo & Termico

EN 410/EN 14501

Test available

AATCC 148

Test available

Resistenza al fuoco

NFPA 701 (meth. 1 or 2) , Pass

EN 13773 , Class 1

BS 5867-2 , Type B

NF P 92/503-507 , M1

DIN 4102 , B1

Übereinstimmung , Pass

UNI VF 8456-8457 , Classe 1

CAN/ULC S109 , Pass

IMO 2010 FTP part 7 , Pass

Solidità allo sfregamento

AATCC 8 (solids)

wet 5 (scale 1-5) / dry 4-5 (scale 1-5)

Resistenza alla luce

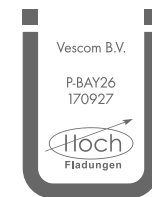
ISO 105-B02

6 (scale 1-8)

AATCC 16.2 option 1 or 16.3 opt 3

4 (scale 1-5)

Etichette



Baustoffklasse schwerentflammbar
DIN 4102, B1

Cura & Manutenzione



Restringimento

Shrinkage 30° warp -1.5% / weft -0.5%

Shrinkage 70° warp -2.0% / weft -0.5%

Tavira

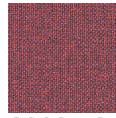
8009.01 - 8009.16



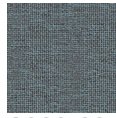
8009.01



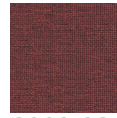
8009.11



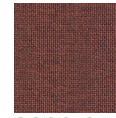
8009.10



8009.09



8009.08



8009.07



8009.06



8009.05



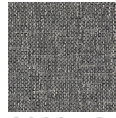
8009.04



8009.03



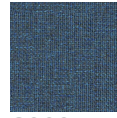
8009.02



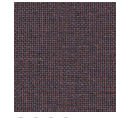
8009.12



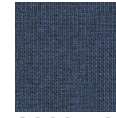
8009.13



8009.14



8009.15



8009.16