

Sylvan

1072.01 - 1072.23



Produto

Revestimento mural

Descrição

Aparência de seda em cores tom sobre tom e variadas

Composição

Camada vinílica estampada com tintas à base de água e base de algodão

Largura

± 130 cm, ± 51 inches

Peso

± 350 gr/m², ± 15 oz/yd¹

Resistência ao fogo

EN 13501 , B, s1 - d0

ASTM E84 , Pass, A

NFPA 286 , Pass

Marcas de qualidade



Sylvan

1072.01 - 1072.23



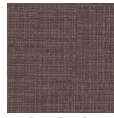
1072.01



1072.02



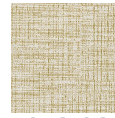
1072.03



1072.04



1072.05



1072.06



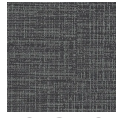
1072.07



1072.08



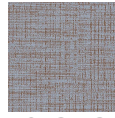
1072.09



1072.10



1072.11



1072.12



1072.13



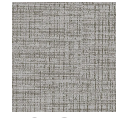
1072.14



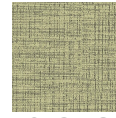
1072.15



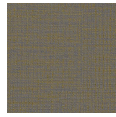
1072.16



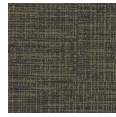
1072.17



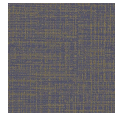
1072.18



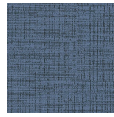
1072.19



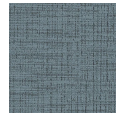
1072.20



1072.21



1072.22



1072.23