

Sylvan

1072.01 - 1072.23



Produkt

Okleina ścienna

Opis

Jednobarwna tkanina o wielu odcieniach tego samego koloru i z efektem wielobarwnego jedwabiu

Skład

Warstwa wierzchnia winylu jest zadrukowana przy użyciu farb na bazie wody, nośnik bawełniany

Szerokość

± 130 cm, ± 51 inches

Gramatura

± 350 gr/m², ± 15 oz/yd¹

Odporność ogniowa

EN 13501 , B, s1 - d0

ASTM E84 , Pass, A

NFPA 286 , Pass

Etykiety



USCG -
EU MRA
0038



vinyl ^{plus}
COMMITTED TO
SUSTAINABLE DEVELOPMENT



EN 15102

Sylvan

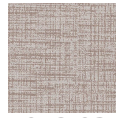
1072.01 - 1072.23



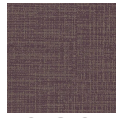
1072.01



1072.02



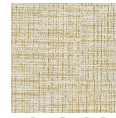
1072.03



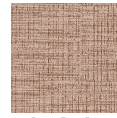
1072.04



1072.05



1072.06



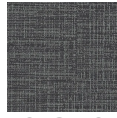
1072.07



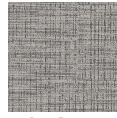
1072.08



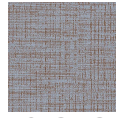
1072.09



1072.10



1072.11



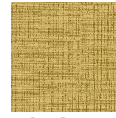
1072.12



1072.13



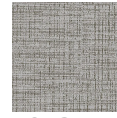
1072.14



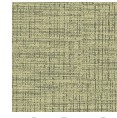
1072.15



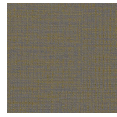
1072.16



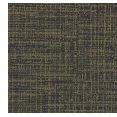
1072.17



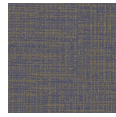
1072.18



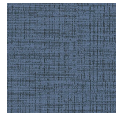
1072.19



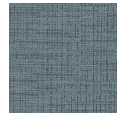
1072.20



1072.21



1072.22



1072.23