

# Sylvan

1072.01 - 1072.23



Prodotto

**Rivestimenti murali**

Descrizione

**Aspetto setoso in tono su tono e multicolore**

Composizione

**Tessuto in puro cotone con spalmatura di monomeri vinilici completamente polimerizzati, stampato con inchiostri a base acquosa**

Larghezza

**± 130 cm, ± 51 inches**

Peso

**± 350 gr/m<sup>2</sup>, ± 15 oz/yd<sup>1</sup>**

Resistenza al fuoco

**EN 13501 , B, s1 - d0**

**ASTM E84 , Pass, A**

**NFPA 286 , Pass**

Etichette



vinyl <sup>plus</sup>  
COMMITTED TO SUSTAINABLE DEVELOPMENT



# Sylvan

1072.01 - 1072.23

---



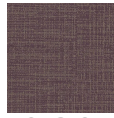
1072.01



1072.02



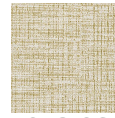
1072.03



1072.04



1072.05



1072.06



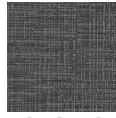
1072.07



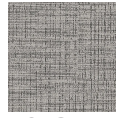
1072.08



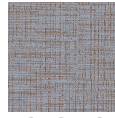
1072.09



1072.10



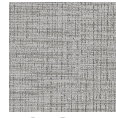
1072.11



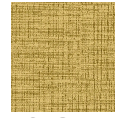
1072.12



1072.13



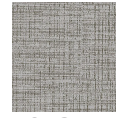
1072.14



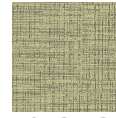
1072.15



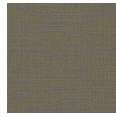
1072.16



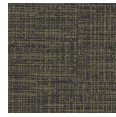
1072.17



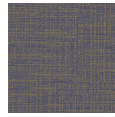
1072.18



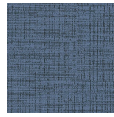
1072.19



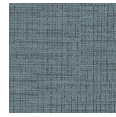
1072.20



1072.21



1072.22



1072.23