

Swan

8071.01 - 8071.16



产品
窗帘

描述

基本透明的窗帘，天然哑光外观

成分

100% 阻燃聚酯纤维

宽幅

± 300 cm, ± 118 inches

重量

± 285 gr/m², ± 9 oz/yd¹

视觉及热舒适控制

EN 410/EN 14501

Test available

阻燃

NFPA 701 (meth. 1 or 2), Pass

EN 13773, Class 1

BS 5867-2, Type C

NF P 92/503-507, M1

DIN 4102, B1

Übereinstimmung, Pass

UNI VF 8456-8457, Classe 1

CAN/ULC S109, Pass

IMO 2010 FTP part 7, Pass

耐摩擦褪色

ISO 105-X12

wet 4-5 (scale 1-5) / dry 4-5 (scale 1-5)

AATCC 8 (solids)

wet 5 (scale 1-5) / dry 5 (scale 1-5)

耐光照褪色

ISO 105-B02

6 (scale 1-8)

AATCC 16.2 option 1 or 16.3 opt 3

5 (scale 1-5)

标签



USCG -
EU MRA
0038



STANDARD
100
507-0023
Hohenstein HTTI



Vescom B.V.

P.BAY26
170927

Baustoffklasse schwerentflammbar
DIN 4102, B1

保养与维护



收缩率

Shrinkage 70° warp 2% / weft -0.4%

Swan

8071.01 - 8071.16



8071.01



8071.02



8071.03



8071.04



8071.05



8071.06



8071.07



8071.08



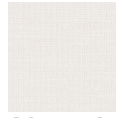
8071.09



8071.10



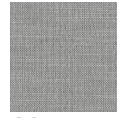
8071.11



8071.12



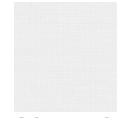
8071.13



8071.14



8071.15



8071.16