

Swan

8071.01 - 8071.16



Producto

Cortinas

Descripción

Tela para cortinas básica transparente del techo al suelo con un aura natural y mate

Composición

100% poliéster ignífugo

Anchura

± 300 cm, ± 118 inches

Peso

± 285 gr/m, ± 9 oz/yd¹

Confort Visual & Térmico

EN 410/EN 14501

Test available

Combustión retardada

NFPA 701 (meth. 1 or 2) , Pass

EN 13773 , Class 1

BS 5867-2 , Type C

NF P 92/503-507 , M1

DIN 4102 , B1

Übereinstimmung , Pass

UNI VF 8456-8457 , Classe 1

CAN/ULC S109 , Pass

IMO 2010 FTP part 7 , Pass

Resistencia al frotamiento

ISO 105-X12

wet 4-5 (scale 1-5) / dry 4-5 (scale 1-5)

AATCC 8 (solids)

wet 5 (scale 1-5) / dry 5 (scale 1-5)

Insensibilidad a la luz

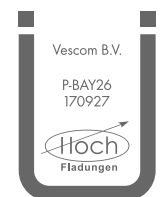
ISO 105-B02

6 (scale 1-8)

AATCC 16.2 option 1 or 16.3 opt 3

5 (scale 1-5)

Etiquetas



Baustoffklasse schwerentflammbar
DIN 4102, B1

Cuidado & Mantenimiento



Contracción

Shrinkage 70° warp 2% / weft -0.4%

Swan

8071.01 - 8071.16



8071.01



8071.02



8071.03



8071.04



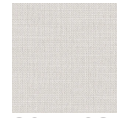
8071.05



8071.06



8071.07



8071.08



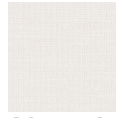
8071.09



8071.10



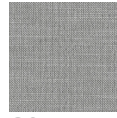
8071.11



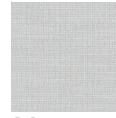
8071.12



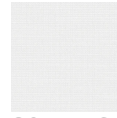
8071.13



8071.14



8071.15



8071.16