

Sotra

8070.01 - 8070.24



product
Curtain

description
Natural silk look curtain fabric, black-out

composition
100% flame retardant polyester acrylic coating

width
± 283 cm, ± 111 inches

weight
± 778 gr/m², ± 25 oz/yd¹

sound absorption
ISO 354, alpha w
0.35

visual & thermal comfort
EN 410/EN 14501
Test available
AATCC 148
Test available

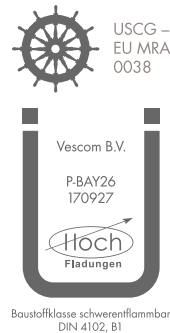
flame retardant
NFPA 701 (meth. 1 or 2) , Pass
EN 13773 , Class 1
BS 5867-2 , Type B
DIN 4102 , B1
Übereinstimmung , Pass
UNI VF 8456-8457 , Classe 1
CAN/ULC S109 , Pass
IMO 2010 FTP part 7 , Pass

colorfastness crocking
ISO 105-X12
wet 4-5 (scale 1-5) / dry 4-5 (scale 1-5)
AATCC 8 (solids)
wet 5 (scale 1-5) / dry 5 (scale 1-5)

colorfastness to light
ISO 105-B02
5 (scale 1-8)
AATCC 16.2 option 1 or 16.3 opt 3
4.5 (scale 1-5)

seam slippage
ASTM D434
warp 48 lbs / weft 53 lbs

labels



care



Shrinkage
Shrinkage 30° - warp -1%
Shrinkage 30° - weft -0.5%
Shrinkage 70° - warp -1.2%
Shrinkage 70° - weft -0.4%

Sotra

8070.01 - 8070.24



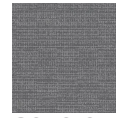
8070.01



8070.02



8070.03



8070.04



8070.05



8070.06



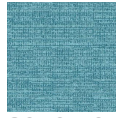
8070.07



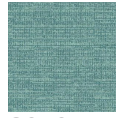
8070.08



8070.09



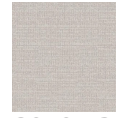
8070.10



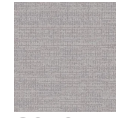
8070.11



8070.12



8070.13



8070.14



8070.15



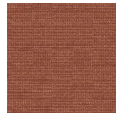
8070.16



8070.17



8070.18



8070.19



8070.20



8070.21



8070.22



8070.23



8070.24