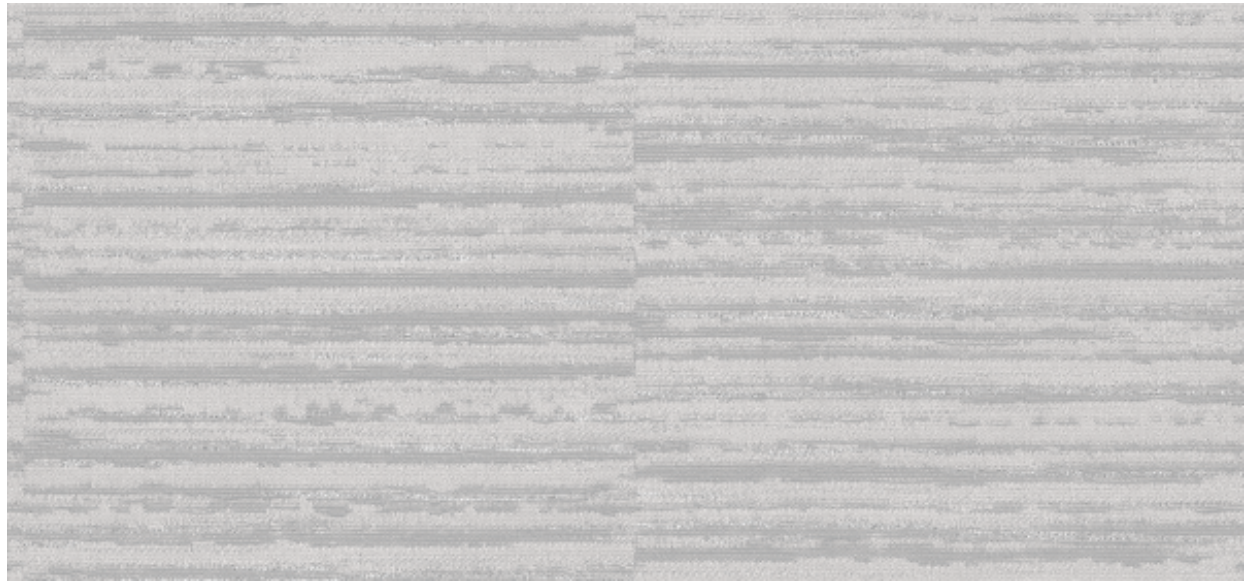


Smooth

2614.10 - 2614.16



Product

Wallcovering

Description

Weave with horizontal effect with gloss finish

Composition

70% polyester / 30% cotton on a paper backing

Width

± 137 cm, ± 54 inches

Weight

± 453 gr/m², ± 20 oz/yd¹

Flame retardancy

EN 13501 , B, s2 - d0

ASTM E84 , Pass, A

Labels



Smooth

2614.10 - 2614.16



2614.14



2614.15



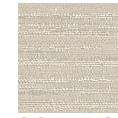
2614.16



2614.11



2614.10



2614.12



2614.13