

Sila

1109.01 - 1109.25



产品
墙布

描述

双色且微妙光泽的无方向性亚麻结构

成分

布底胶面,水性涂料印染

宽幅

± 130 cm, ± 51 inches

重量

± 350 gr/m², ± 15 oz/yd¹

吸声降噪

ISO 354, alpha w

0.10

ASTM C423, nrc

0.10

阻燃

EN 13501 , B, s1 - d0

ASTM E84 , Pass, A

IMO 2010 FTP part 2-5 , Pass

耐光照褪色

ISO 105-B02

7 (scale 1-8)

标签



vinyl ^{plus}
COMMITTED TO
SUSTAINABLE DEVELOPMENT



Sila

1109.01 - 1109.25



1109.04



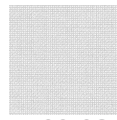
1109.05



1109.06



1109.07



1109.08



1109.09



1109.10



1109.11



1109.12



1109.13



1109.14



1109.15



1109.16



1109.17



1109.18



1109.19



1109.20



1109.21



1109.22



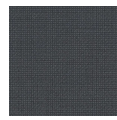
1109.23



1109.24



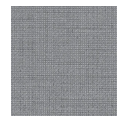
1109.25



1109.01



1109.02



1109.03