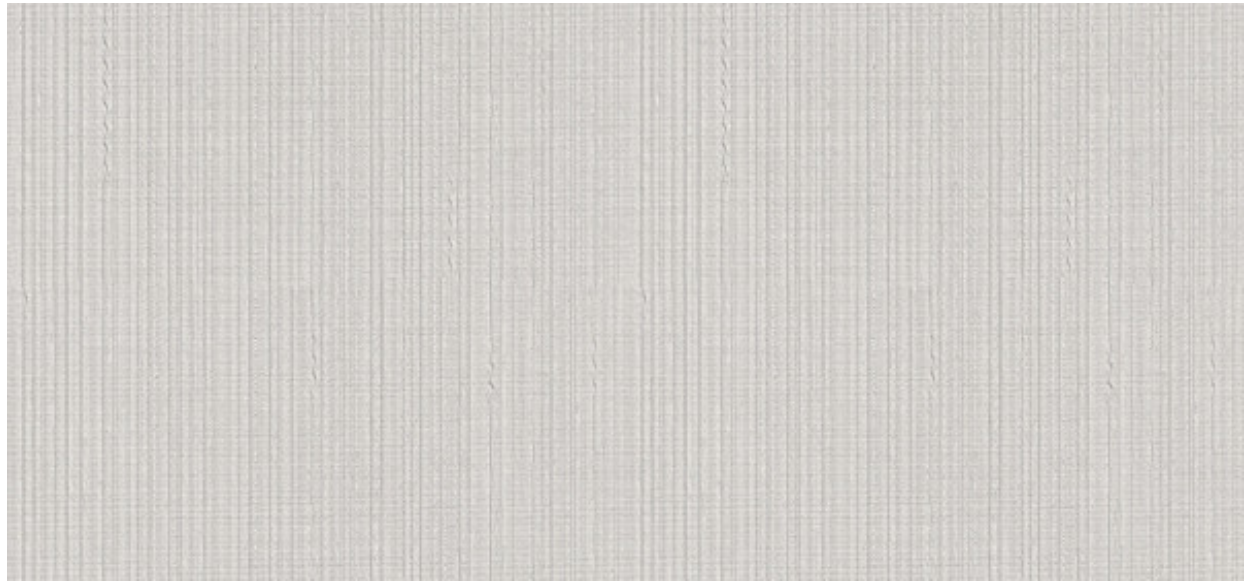


Seneca

1016.01 - 1016.18



Producto

Revestimiento mural

Descripción

Estructura longitudinal textil

Composición

**Capa vinílica estampada con tintas al agua,
sobre soporte de algodón**

Anchura

± 130 cm, ± 51/52 inches

Peso

± 350 gr/m², ± 15 oz/yd¹

Combustión retardada

EN 13501 , B, s1 - d0

ASTM E84 , Pass, A

Etiquetas



Seneca

1016.01 - 1016.18



1016.01



1016.02



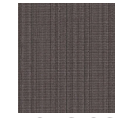
1016.03



1016.04



1016.05



1016.06



1016.07



1016.08



1016.09



1016.10



1016.11



1016.12



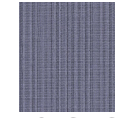
1016.13



1016.14



1016.15



1016.16



1016.17



1016.18