

Scott

7045.01 - 7045.18



Produto

Revestimento para mobiliário

Descrição

Imagem global formada por pequenas linhas horizontais e verticais

Composição

Espuma vinílica, base de malha de algodão/poliéster

Largura

± 137-140 cm, ± 54-55 inches

Peso

± 800 gr/m², ± 36 oz/yd¹

Resistência ao fogo

EN 1021/1-2 , Pass

BS 5852 , Crib 5

NF P 92/503-507 or NF D 60-013 , M2

DIN 4102 , B2

Cal TB 117-2013, section 1 , Pass

IMO 2010 FTP part 8 , Pass

NFPA 260 , Class 1

Resistência à fricção

ISO 105 X12

wet 5 (scale 1-5) / dry 5 (scale 1-5)

AATCC 8

wet 5 (scale 1-5) / dry 5 (scale 1-5)

Resistência à luz

ISO 105 B02

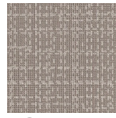
7 (scale 1-8)

Marcas de qualidade

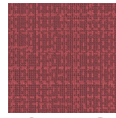


Scott

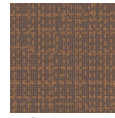
7045.01 - 7045.18



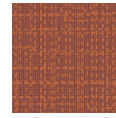
7045.17



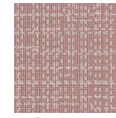
7045.18



7045.15



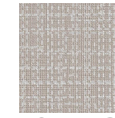
7045.16



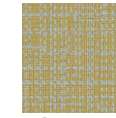
7045.14



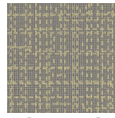
7045.13



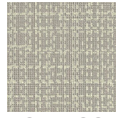
7045.12



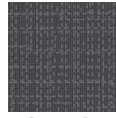
7045.11



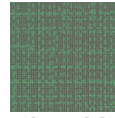
7045.10



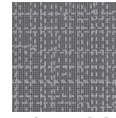
7045.09



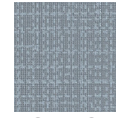
7045.07



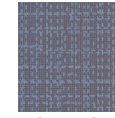
7045.08



7045.06



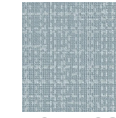
7045.05



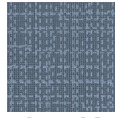
7045.04



7045.01



7045.02



7045.03