

Rona

8080.01 - 8080.09



Product
Curtain

Description
Matte, irregular textured weave in a natural linen inspired look

Composition
100% flame retardant polyester

Width
± 301 cm, ± 118 inches

Weight
± 762 gr/m, ± 25 oz/yd¹

Sound absorption
ISO 354, alpha w
0.75 (pleated)

Visual & Thermal comfort
EN 410/EN 14501
Test available

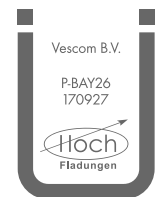
Flame retardancy
NFPA 701 (meth. 1 or 2) , Pass
EN 13773 , Class 1
BS 5867-2 , Type C
NF P 92/503-507 , M1
DIN 4102 , B1
Übereinstimmung , Pass
UNI VF 8456-8457 , Classe 1
CAN/ULC S109 , Pass
IMO 2010 FTP part 7 , Pass

Colorfastness to crocking
ISO 105-X12
wet 4-5 (scale 1-5) / dry 4-5 (scale 1-5)
AATCC 8 (solids)
wet 5 (scale 1-5) / dry 5 (scale 1-5)

Colorfastness to light
ISO 105-B02
6 (scale 1-8)
AATCC 16.2 option 1 or 16.3 opt 3
4.5 (scale 1-5)

Seam slippage
ISO 13936-2
warp 3.7 mm / weft 4 mm
ASTM D434
warp 49 lbs / weft 55 lbs

Labels



Baustoffklasse schwerentflammbar
DIN 4102, B1

Care & Maintenance



Rona

Shrinkage

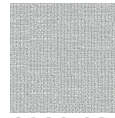
8080.01 - 8080.09
Shrinkage 70°C max. 2.1% / weft -1.8%



8080.01



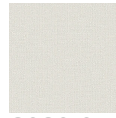
8080.02



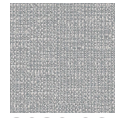
8080.03



8080.04



8080.05



8080.06



8080.07



8080.08



8080.09