

# Rona

8080.01 - 8080.09



**Product**  
**Curtain**

**Description**  
**Matte, irregular textured weave in a natural linen inspired look**

**Composition**  
**100% flame retardant polyester**

**Width**  
**± 301 cm, ± 118 inches**

**Weight**  
**± 762 gr/m, ± 25 oz/yd<sup>1</sup>**

**Sound absorption**  
**ISO 354, alpha w**  
0.75 (pleated)

**Visual & Thermal comfort**  
**EN 410/EN 14501**  
Test available

**Flame retardancy**  
**NFPA 701 (meth. 1 or 2) , Pass**  
**EN 13773 , Class 1**  
**BS 5867-2 , Type C**  
**NF P 92/503-507 , M1**  
**DIN 4102 , B1**  
**Übereinstimmung , Pass**  
**UNI VF 8456-8457 , Classe 1**  
**CAN/ULC S109 , Pass**  
**IMO 2010 FTP part 7 , Pass**

**Colorfastness to crocking**  
**ISO 105-X12**  
wet 4-5 (scale 1-5) / dry 4-5 (scale 1-5)  
**AATCC 8 (solids)**  
wet 5 (scale 1-5) / dry 5 (scale 1-5)

**Colorfastness to light**  
**ISO 105-B02**  
6 (scale 1-8)  
**AATCC 16.2 option 1 or 16.3 opt 3**  
4.5 (scale 1-5)

**Seam slippage**  
**ISO 13936-2**  
warp 3.7 mm / weft 4 mm  
**ASTM D434**  
warp 49 lbs / weft 55 lbs

**Labels**



USCG -  
EU MRA  
0038



STANDARD  
100  
S07-0023  
Hohenstein HTTI



Baustoffklasse schwerentflammbar  
DIN 4102, B1

Care & Maintenance



# Rona

Shrinkage

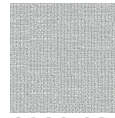
8080.01 - 8080.09  
Shrinkage 70°C max. 2.1% / weft -1.8%



8080.01



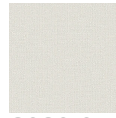
8080.02



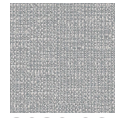
8080.03



8080.04



8080.05



8080.06



8080.07



8080.08



8080.09