

Rona

8080.01 - 8080.09



product
Curtain

description
Matte, irregular textured weave in a natural linen inspired look

composition
100% flame retardant polyester

width
± 301 cm, ± 118 inches

weight
± 762 gr/m², ± 25 oz/yd¹

sound absorption
ISO 354, alpha w
0.75 (pleated)

visual & thermal comfort
EN 410/EN 14501
Test available

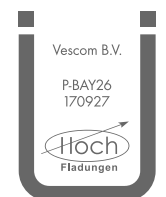
flame retardant
NFPA 701 (meth. 1 or 2) , Pass
EN 13773 , Class 1
BS 5867-2 , Type C
NF P 92/503-507 , M1
DIN 4102 , B1
Übereinstimmung , Pass
UNI VF 8456-8457 , Classe 1
CAN/ULC S109 , Pass
IMO 2010 FTP part 7 , Pass

colorfastness crocking
ISO 105-X12
wet 4-5 (scale 1-5) / dry 4-5 (scale 1-5)
AATCC 8 (solids)
wet 5 (scale 1-5) / dry 5 (scale 1-5)

colorfastness to light
ISO 105-B02
6 (scale 1-8)
AATCC 16.2 option 1 or 16.3 opt 3
4.5 (scale 1-5)

seam slippage
ISO 13936-2
warp 3.7 mm / weft 4 mm
ASTM D434
warp 49 lbs / weft 55 lbs

labels



Baustoffklasse schwerentflammbar
DIN 4102, B1

care



Rona

Shrinkage
8080.01 - 8080.09
Shrinkage 70° - weft -3.1%
Shrinkage 70° - weft -1.8%



8080.01



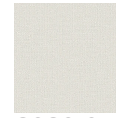
8080.02



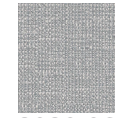
8080.03



8080.04



8080.05



8080.06



8080.07



8080.08



8080.09