

Rolla

7065.01 - 7065.20



Produkt

Materiał obiciowy

Opis

Trójwymiarowa i wytrzymała tkanina meblowa w graficzne wzory

Skład

88% recycled polyester FR / 12% polyester FR

Szerokość

± 140 cm, ± 55 inches

Gramatura

± 775 gr/m, ± 25 oz/yd¹

Odporność ogniowa

EN 1021/1-2 , Pass

BS 5852 , Crib 5

NF P 92/503-507 or NF D 60-013 , M1

DIN 4102 , B1

Cal TB 117-2013, section 1 , Pass

IMO 2010 FTP part 8 , Pass

NFPA 260 , Class 1

Odporność na wycieranie

ISO 105 X12

wet 4-5 (scale 1-5) / dry 4-5 (scale 1-5)

AATCC 8

wet 5 (scale 1-5) / dry 4.5 (scale 1-5)

Odporność na działanie światła

ISO 105 B02

6 (scale 1-8)

AATCC 16.2 opt.1 or 16.3 opt. 3

4 (scale 1-5)

Wytrzymałość szwów

ISO 13936-2

warp 2.3 mm / weft 2 mm

ASTM D4034

warp 102 lbs / weft 83 lbs

Etykiety



USCG -
EU MRA
0038



STANDARD
100
507-0023
Hohenstein HTTI

Pielęgnacja & Konserwacja



Kurczliwość

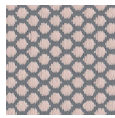
Shrinkage 70° warp -2.8% / weft -2.6%

Rolla

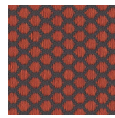
7065.01 - 7065.20



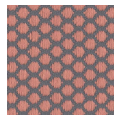
7065.01



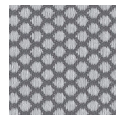
7065.02



7065.03



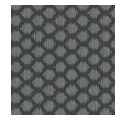
7065.04



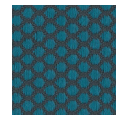
7065.05



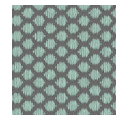
7065.06



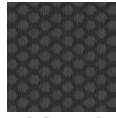
7065.07



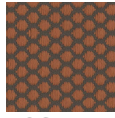
7065.08



7065.09



7065.10



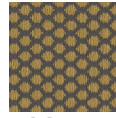
7065.11



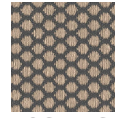
7065.12



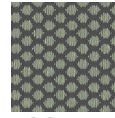
7065.13



7065.14



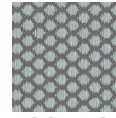
7065.16



7065.17



7065.18



7065.19



7065.20



7065.15