

Rani

8067.01 - 8067.22



Produto

Cortina

Descrição

Tecido para cortina com aspecto de linho estruturado, dim out

Composição

100% poliéster resistente ao fogo

Largura

± 294 cm, ± 116 inches

Peso

± 861 gr/m, ± 28 oz/yd¹

Conforto Visual & Térmico

EN 410/EN 14501

Test available

AATCC 148

Test available

Resistência ao fogo

NFPA 701 (meth. 1 or 2) , Pass

EN 13773 , Class 1

BS 5867-2 , Type C

NF P 92/503-507 , M1

DIN 4102 , B1

Übereinstimmung , Pass

UNI VF 8456-8457 , Classe 1

CAN/ULC S109 , Pass

IMO 2010 FTP part 7 , Pass

Resistência à fricção

ISO 105-X12

wet 4-5 (scale 1-5) / dry 4-5 (scale 1-5)

AATCC 8 (solids)

wet 5 (scale 1-5) / dry 5 (scale 1-5)

Resistência à luz

ISO 105-B02

5 (scale 1-8)

AATCC 16.2 option 1 or 16.3 opt 3

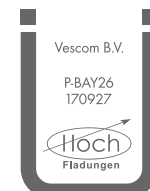
2.5 (scale 1-5)

Resistência ao deslizamento das costuras

ASTM D434

warp 53.5 lbs / weft 48 lbs

Marcas de qualidade



Baustoffklasse schwerentflammbar
DIN 4102, B1

Cuidados & Manutenção



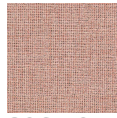
Encolhimento

Shrinkage 30° warp -0.8% / weft -0.4%

Shrinkage 70° warp -1.6% / weft -0.7%

Rani

8067.01 - 8067.22



8067.01



8067.02



8067.03



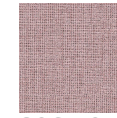
8067.04



8067.05



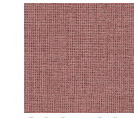
8067.06



8067.07



8067.08



8067.09



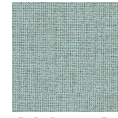
8067.10



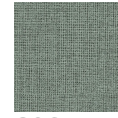
8067.11



8067.12



8067.13



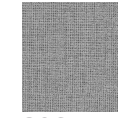
8067.14



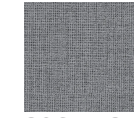
8067.15



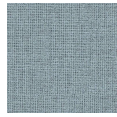
8067.16



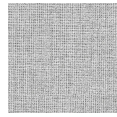
8067.17



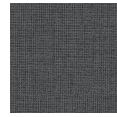
8067.18



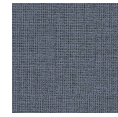
8067.19



8067.20



8067.21



8067.22