

Rani

8067.01 - 8067.22



Produit

Tissus pour rideaux

Description

Rideau à structure lin, dim-out

Composition

100% polyester ignifuge

Largeur

± 294 cm, ± 116 inches

Poids

± 861 gr/m, ± 28 oz/yd¹

Confort Visuel & Thermique

EN 410/EN 14501

Test available

AATCC 148

Test available

Non feu

NFPA 701 (meth. 1 or 2) , Pass

EN 13773 , Class 1

BS 5867-2 , Type C

NF P 92/503-507 , M1

DIN 4102 , B1

Übereinstimmung , Pass

UNI VF 8456-8457 , Classe 1

CAN/ULC S109 , Pass

IMO 2010 FTP part 7 , Pass

Résistance au frottement

ISO 105-X12

wet 4-5 (scale 1-5) / dry 4-5 (scale 1-5)

AATCC 8 (solids)

wet 5 (scale 1-5) / dry 5 (scale 1-5)

Solidité lumière

ISO 105-B02

5 (scale 1-8)

AATCC 16.2 option 1 or 16.3 opt 3

2.5 (scale 1-5)

Résistance au glissement à la couture

ASTM D434

warp 53.5 lbs / weft 48 lbs

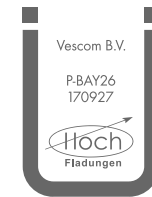
Étiquettes



USCG -
EU MRA
0038



STANDARD
100
507-0023
Hohenstein HTTI



Baustoffklasse schwerentflammbar
DIN 4102, B1

Entretien & Maintenance



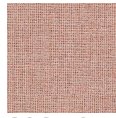
Rétrécissement

Shrinkage 30° warp -0.8% / weft -0.4%

Shrinkage 70° warp -1.6% / weft -0.7%

Rani

8067.01 - 8067.22



8067.01



8067.02



8067.03



8067.04



8067.05



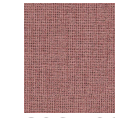
8067.06



8067.07



8067.08



8067.09



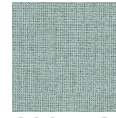
8067.10



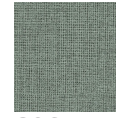
8067.11



8067.12



8067.13



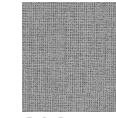
8067.14



8067.15



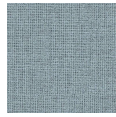
8067.16



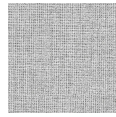
8067.17



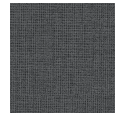
8067.18



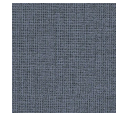
8067.19



8067.20



8067.21



8067.22