

Rani

8067.01 - 8067.22



Product
Curtain

Description
Structured linen look curtain fabric, dim-out

Composition
100% flame retardant polyester

Width
± 294 cm, ± 116 inches

Weight
± 861 gr/m², ± 28 oz/yd¹

Visual & Thermal comfort
EN 410/EN 14501

Test available
AATCC 148
Test available

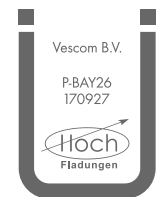
Flame retardancy
NFPA 701 (meth. 1 or 2) , Pass
EN 13773 , Class 1
BS 5867-2 , Type C
NF P 92/503-507 , M1
DIN 4102 , B1
Übereinstimmung , Pass
UNI VF 8456-8457 , Classe 1
CAN/ULC S109 , Pass
IMO 2010 FTP part 7 , Pass

Colorfastness to crocking
ISO 105-X12
wet 4-5 (scale 1-5) / dry 4-5 (scale 1-5)
AATCC 8 (solids)
wet 5 (scale 1-5) / dry 5 (scale 1-5)

Colorfastness to light
ISO 105-B02
5 (scale 1-8)
AATCC 16.2 option 1 or 16.3 opt 3
2.5 (scale 1-5)

Seam slippage
ASTM D434
warp 53.5 lbs / weft 48 lbs

Labels



Baustoffklasse schwerentflammbar
DIN 4102, B1

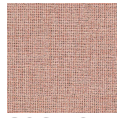
Care & Maintenance



Shrinkage
Shrinkage 30° - warp -0.8%
Shrinkage 30° - weft -0.4%
Shrinkage 70° - warp -1.6%
Shrinkage 70° - weft -0.7%

Rani

8067.01 - 8067.22



8067.01



8067.02



8067.03



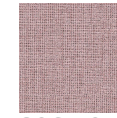
8067.04



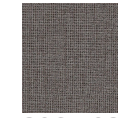
8067.05



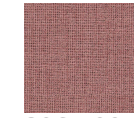
8067.06



8067.07



8067.08



8067.09



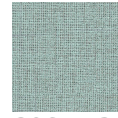
8067.10



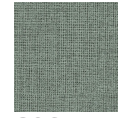
8067.11



8067.12



8067.13



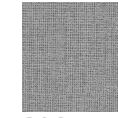
8067.14



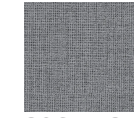
8067.15



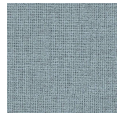
8067.16



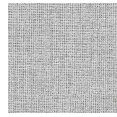
8067.17



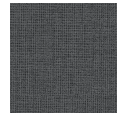
8067.18



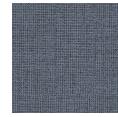
8067.19



8067.20



8067.21



8067.22