

# Palena

1070.01 - 1070.19



Produit

**Revêtement mural**

Description

**Une structure en chevrons**

Composition

**Couche vinyle, impression au moyen d'encre à base d'eau, support en coton**

Largeur

**± 130 cm, ± 51 inches**

Poids

**± 550 gr/m<sup>2</sup>, ± 23 oz/yd<sup>2</sup>**

Non feu

**EN 13501 , B, s2 - d0**

**ASTM E84 , Pass, A**

**NFPA 286 , Pass**

Étiquettes



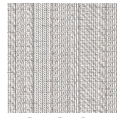
vinyl <sup>plus</sup>  
COMMITTED TO SUSTAINABLE DEVELOPMENT

CE EN 15102

# Palena

1070.01 - 1070.19

---



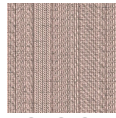
1070.01



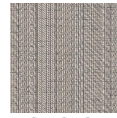
1070.02



1070.03



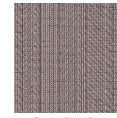
1070.04



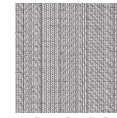
1070.05



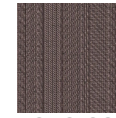
1070.06



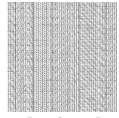
1070.07



1070.08



1070.09



1070.10



1070.11



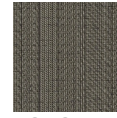
1070.12



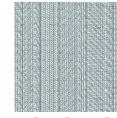
1070.13



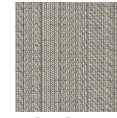
1070.14



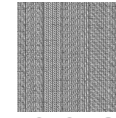
1070.15



1070.16



1070.17



1070.18



1070.19