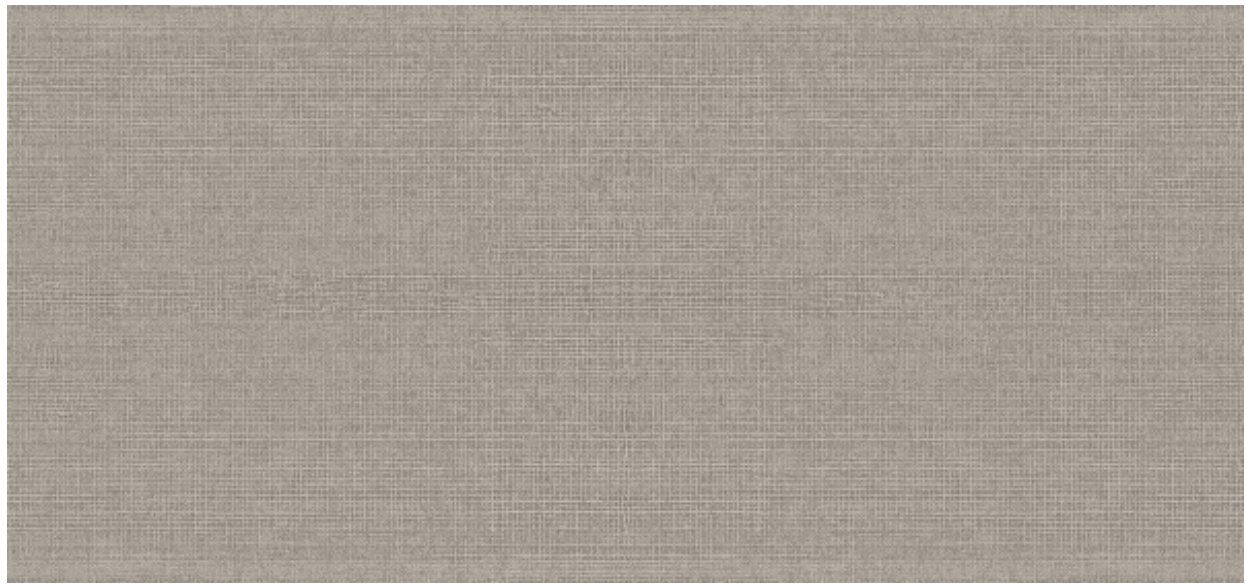


Orienta

2617.10 - 2617.19



Produit

Revêtement mural

Description

Une structure tissée métallisée, fine

Composition

70% pulpe de bois / 30% polyester sur support papier

Largeur

± 137 cm, ± 54 inches

Poids

± 161 gr/m², ± 7 oz/yd¹

Non feu

EN 13501 , B, s2 - d0

ASTM E84 , Pass, A

Étiquettes



Oriente

2617.10 - 2617.19



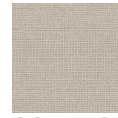
2617.10



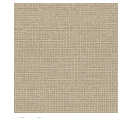
2617.11



2617.12



2617.13



2617.14



2617.15



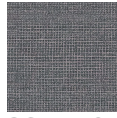
2617.16



2617.17



2617.18



2617.19