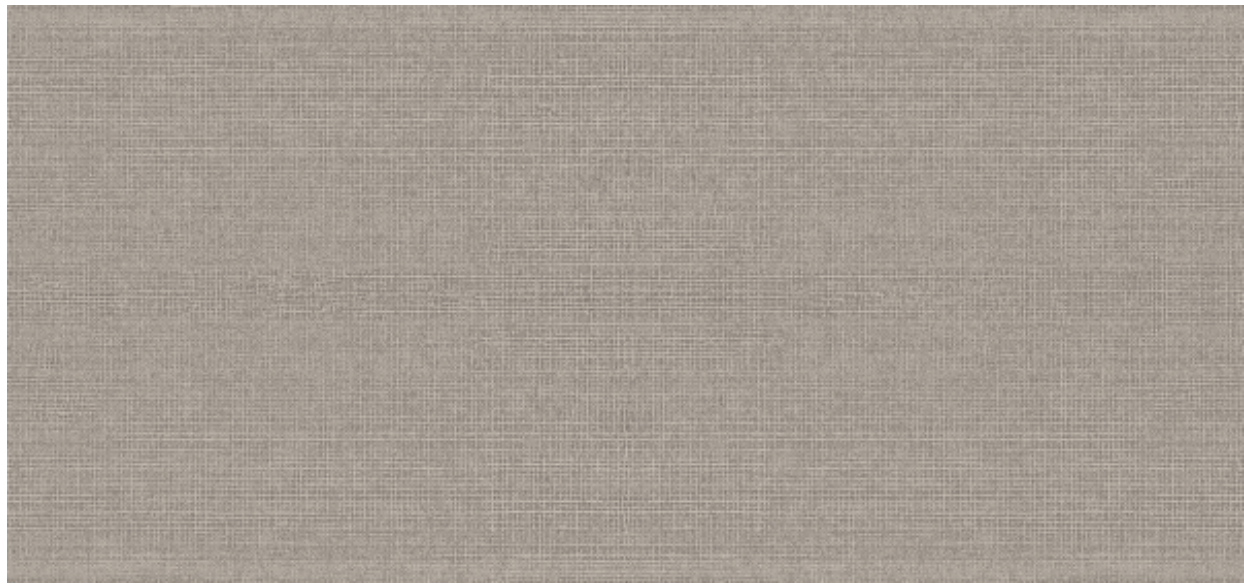


Orienta

2617.10 - 2617.19



Producto

Revestimiento mural

Peso

± 161 gr/m², ± 7 oz/yd¹

Descripción

Estructura tejida fina y metalizada

Combustión retardada

EN 13501 , B, s2 - d0

ASTM E84 , Pass, A

Composición

70% pulpa de madera / 30% poliéster en soporte de papel

Etiquetas

Anchura

± 137 cm, ± 54 inches



Oriente

2617.10 - 2617.19



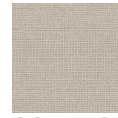
2617.10



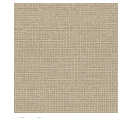
2617.11



2617.12



2617.13



2617.14



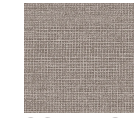
2617.15



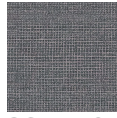
2617.16



2617.17



2617.18



2617.19