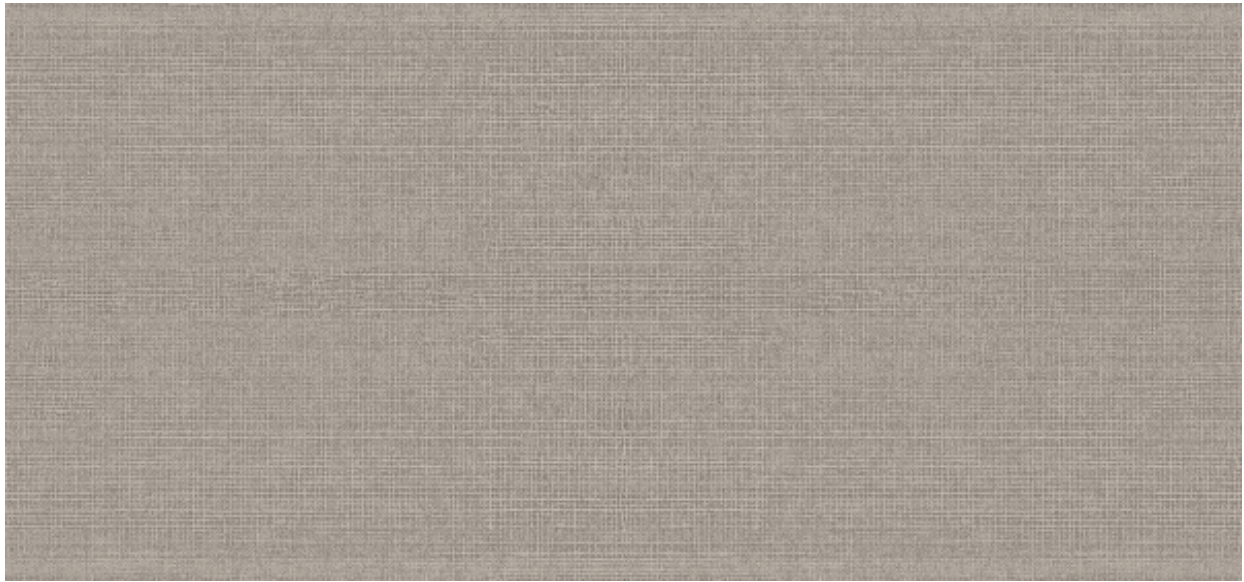


Oriente

2617.10 - 2617.19



Product

Wallcovering

Description

Fine, metallic woven structure

Composition

70% woodpulp / 30% polyester on a paper backing

Width

± 137 cm, ± 54 inches

Weight

± 161 gr/m², ± 7 oz/yd¹

Flame retardancy

EN 13501 , B, s2 - d0

ASTM E84 , Pass, A

Labels



Oriente

2617.10 - 2617.19



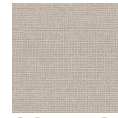
2617.10



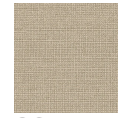
2617.11



2617.12



2617.13



2617.14



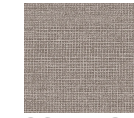
2617.15



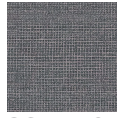
2617.16



2617.17



2617.18



2617.19