

Onari

1076.01 - 1076.25



Prodotto
Rivestimenti murali

Descrizione
Effetto tessile a nervatura verticale, su sfondo irregolare

Composizione
Tessuto in puro cotone con spalmatura di monomeri vinilici completamente polimerizzati, stampato con inchiostri a base acquosa

Larghezza
± 130 cm, ± 51 inches

Peso
± 440 gr/m², ± 18 oz/yd¹

Resistenza al fuoco
**EN 13501 , B, s2 - d0
ASTM E84 , Pass, A**

Resistenza alla luce
**ISO 105-B02
Light 7 / dark 7 (scale 1-8)**

Etichette

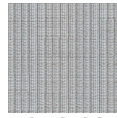


Onari

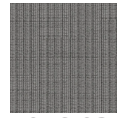
1076.01 - 1076.25



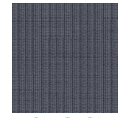
1076.01



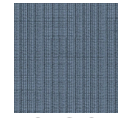
1076.02



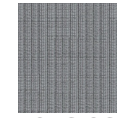
1076.03



1076.04



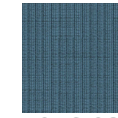
1076.05



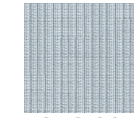
1076.06



1076.07



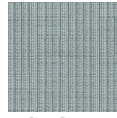
1076.08



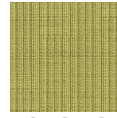
1076.09



1076.10



1076.11



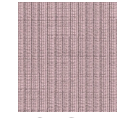
1076.12



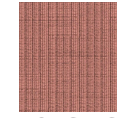
1076.13



1076.14



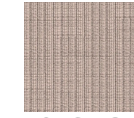
1076.15



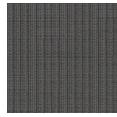
1076.16



1076.17



1076.18



1076.19



1076.20



1076.21



1076.22



1076.23



1076.24



1076.25