

# Noss

7058.01 - 7058.24



## Product

### Upholstery

## Description

**Woven chenille blended in soft colours**

## Composition

**100% flame retardant polyester**

## Width

**± 140 cm, ± 55 inches**

## Weight

**± 904 gr/m, ± 29 oz/yd<sup>1</sup>**

## Flame retardancy

**EN 1021/1-2 , Pass**

**BS 5852 , Crib 5**

**NF P 92/503-507 or NF D 60-013 , M1**

**DIN 4102 , B1**

**Cal TB 117-2013, section 1 , Pass**

**IMO 2010 FTP part 8 , Pass**

**NFPA 260 , Class 1**

## Colorfastness to crocking

**ISO 105 X12**

wet 4 - 5 (scale 1-5) / dry 4 - 5 (scale 1-5)

**AATCC 8**

wet 5 (scale 1-5) / dry 5 (scale 1-5)

## Colorfastness to light

**ISO 105 B02**

6 - 7 (scale 1-8)

**AATCC 16.2 opt.1 or 16.3 opt. 3**

5 (scale 1-5)

## Seam slippage

**ISO 13936-2**

warp 3.3 mm / weft 3 mm

**ASTM D4034**

warp 77 lbs / weft 91 lbs

## Labels



USCG -  
EU MRA  
0038



STANDARD  
100  
507-0023  
Hohenstein HTTI

## Care & Maintenance



## Shrinkage

Shrinkage 30° warp -1.5% / weft -1.7%

Shrinkage 70° warp -1.6% / weft -3%

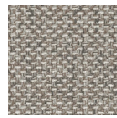
# Noss

7058.01 - 7058.24

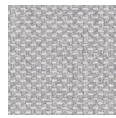
---



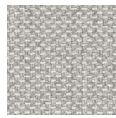
7058.01



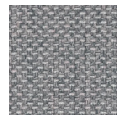
7058.02



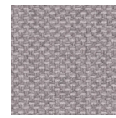
7058.03



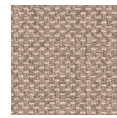
7058.04



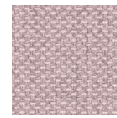
7058.05



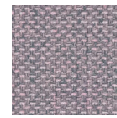
7058.06



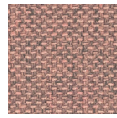
7058.07



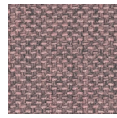
7058.08



7058.09



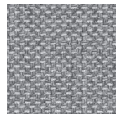
7058.10



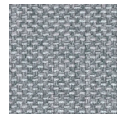
7058.11



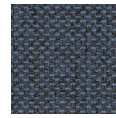
7058.12



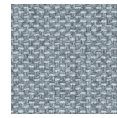
7058.13



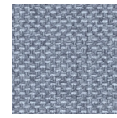
7058.14



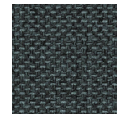
7058.15



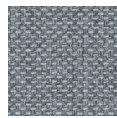
7058.16



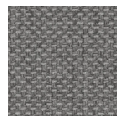
7058.17



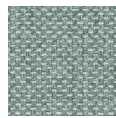
7058.18



7058.19



7058.20



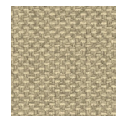
7058.21



7058.22



7058.23



7058.24