

Norfolk

7069.01 – 7069.16



Producto

Tapicerías

Descripción

Tela para tapicería bitonal fabricada con residuos de plástico 100% reciclado, una cuadrícula gráfica completa con efecto tridimensional

Composición

100% recycled polyester FR

Anchura

± 148 cm, ± 58 inches

Peso

± 624 gr/m², ± 20 oz/yd¹

Combustión retardada

EN 1021/1-2 , Pass

BS 5852 , Crib 5

DIN 4102 , B1

Cal TB 117-2013, section 1 , Pass

IMO 2010 FTP part 8 , Pass

NFPA 260 , Class 1

Resistencia al frotamiento

ISO 105 X12

wet 4-5 (scale 1-5) / dry 4-5 (scale 1-5)

Insensibilidad a la luz

ISO 105 B02

6 (scale 1-8)

Resistencia al deslizamiento de costuras

ISO 13936-2

warp 3 mm / weft 2 mm

Etiquetas



USCG -
EU MRA
0038



STANDARD
100
521-3365
Hohenstein HTTI

Cuidado & Mantenimiento



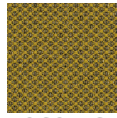
Contracción

Shrinkage 30° - warp -2%

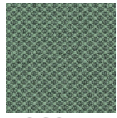
Shrinkage 30° - weft -3%

Norfolk

7069.01 – 7069.16



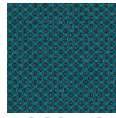
7069.16



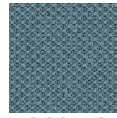
7069.15



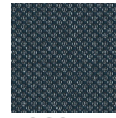
7069.14



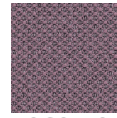
7069.13



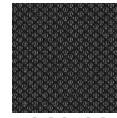
7069.12



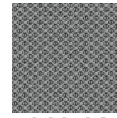
7069.11



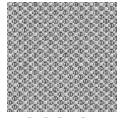
7069.10



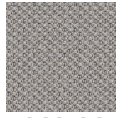
7069.09



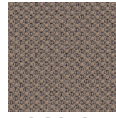
7069.08



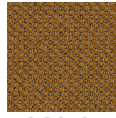
7069.07



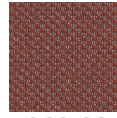
7069.06



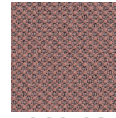
7069.05



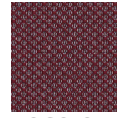
7069.04



7069.03



7069.02



7069.01