

Nirmala

2623.00 – 2623.16



Product
Wallcovering

Description
Rough silk mélange wallcovering with a matte two-tonal irregular and handcrafted look by using a horizontal slub yarn

Composition
80% silk / 20% recycled polyester on a paper backing

Width
± 110 cm, ± 43 inches

Weight
± 210 gr/m², ± 7 oz/yd¹

Flame retardancy
EN 13501 , B, s1 - d0
ASTM E84 , Pass, A

Colorfastness to light
ISO 105-B02
5-7 (scale 1-8)

Labels

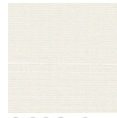


Nirmala

2623.00 – 2623.16



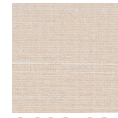
2623.00



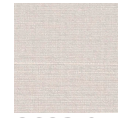
2623.01



2623.02



2623.03



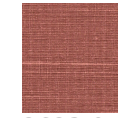
2623.04



2623.05



2623.06



2623.07



2623.08



2623.09



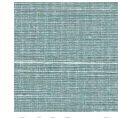
2623.10



2623.11



2623.12



2623.13



2623.14



2623.15



2623.16