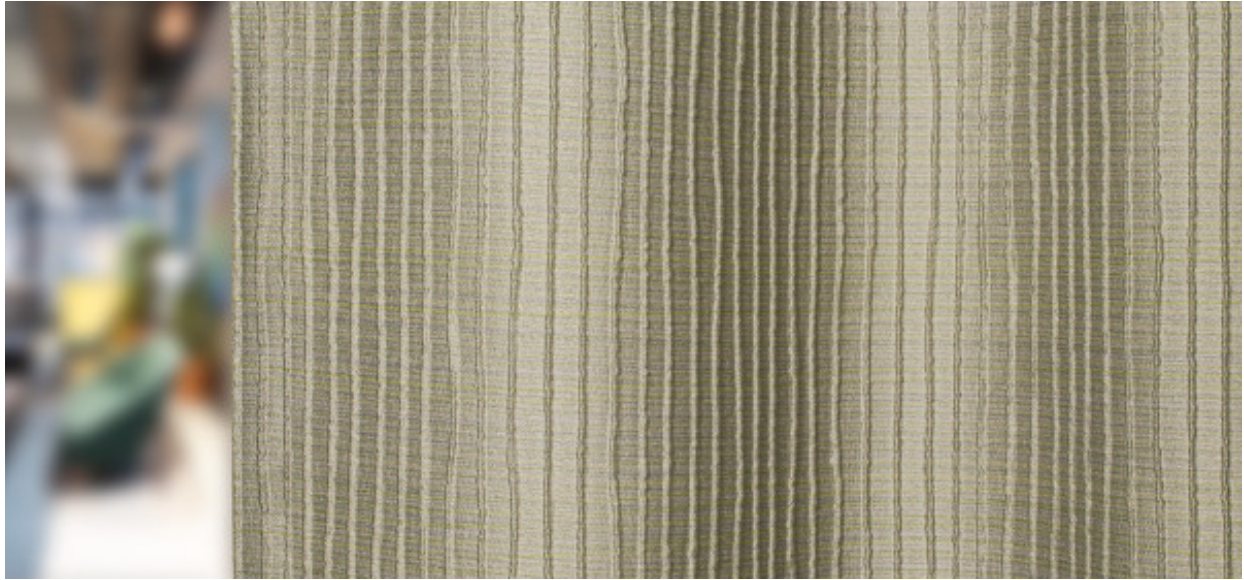


# Naltar

8083.01 - 8083.16



产品  
窗帘

描述  
色调渐变且纵向有机三维肋状结构的双层编织

成分  
100% 阻燃聚酯纤维

宽幅  
± 144 cm, ± 57 inches

重量  
± 273 gr/m, ± 9 oz/yd<sup>1</sup>

吸声降噪  
ISO 354, alpha w  
0.50 (pleated)

视觉及热舒适控制  
EN 410/EN 14501  
Test available

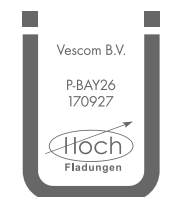
阻燃  
NFPA 701 (meth. 1 or 2), Pass  
EN 13773, Class 1  
BS 5867-2, Type C  
NF P 92/503-507, M1  
DIN 4102, B1  
Übereinstimmung, Pass  
UNI VF 8456-8457, Classe 1  
CAN/ULC S109, Pass  
IMO 2010 FTP part 7, Pass

耐摩擦褪色  
ISO 105-X12  
wet 4-5 (scale 1-5) / dry 4-5 (scale 1-5)  
AATCC 8 (solids)  
wet 5 (scale 1-5) / dry 5 (scale 1-5)

耐光照褪色  
ISO 105-B02  
6 (scale 1-8)  
AATCC 16.2 option 1 or 16.3 opt 3  
5 (scale 1-5)

耐滑缝  
ISO 13936-2  
warp 2.5 mm / weft 2.7 mm  
ASTM D434  
warp 29 lbs / weft 29 lbs

标签



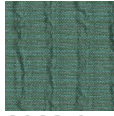
Baustoffklasse schwerentflammbar  
DIN 4102, B1

保养与维护

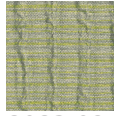


# Naltar

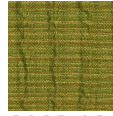
8083.01 - 8083.16  
Shiribaga 70° max -1.4% / weft +1.5%



8083.01



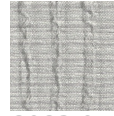
8083.02



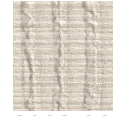
8083.03



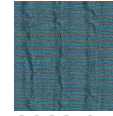
8083.04



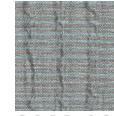
8083.05



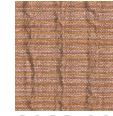
8083.06



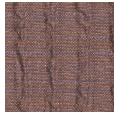
8083.07



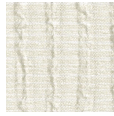
8083.08



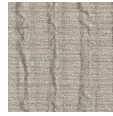
8083.09



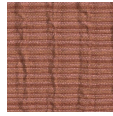
8083.10



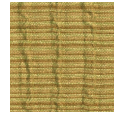
8083.11



8083.12



8083.13



8083.14



8083.15



8083.16