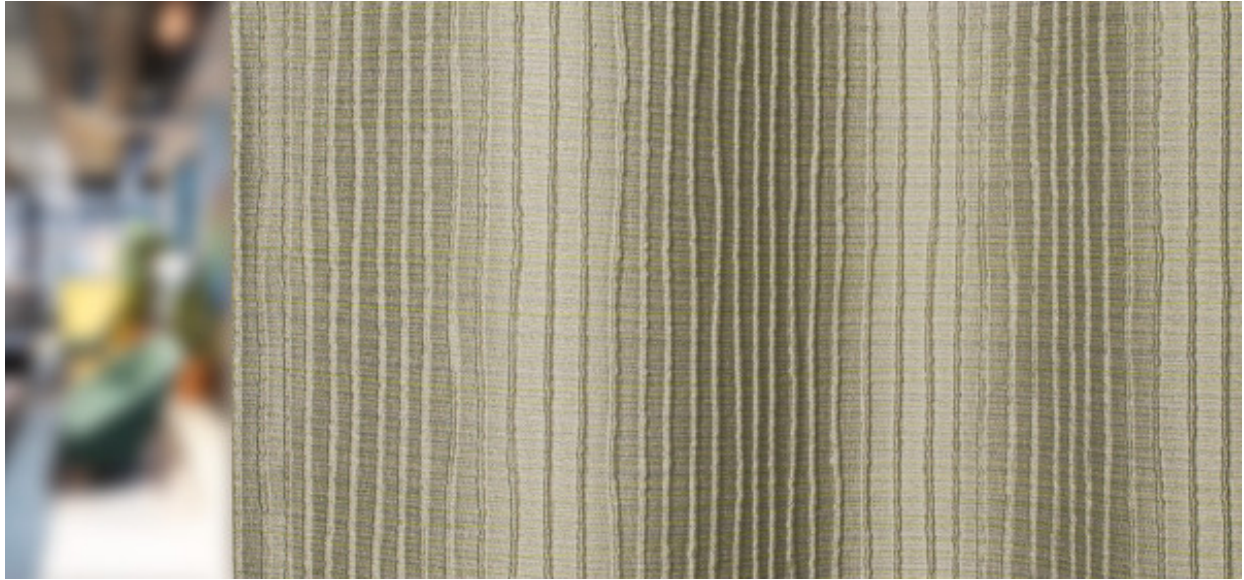


Naltar

8083.01 - 8083.16



Producto

Cortinas

Descripción

Tejido doble con una estructura de nervadura 3D orgánica vertical

Composición

100% poliéster ignífugo

Anchura

± 144 cm, ± 57 inches

Peso

± 273 gr/m, ± 9 oz/yd¹

Absorción del ruido

ISO 354, alpha w

0.50 (pleated)

Confort Visual & Térmico

EN 410/EN 14501

Test available

Combustión retardada

NFPA 701 (meth. 1 or 2) , Pass

EN 13773 , Class 1

BS 5867-2 , Type C

NF P 92/503-507 , M1

DIN 4102 , B1

Übereinstimmung , Pass

UNI VF 8456-8457 , Classe 1

CAN/ULC S109 , Pass

IMO 2010 FTP part 7 , Pass

Resistencia al frotamiento

ISO 105-X12

wet 4-5 (scale 1-5) / dry 4-5 (scale 1-5)

AATCC 8 (solids)

wet 5 (scale 1-5) / dry 5 (scale 1-5)

Insensibilidad a la luz

ISO 105-B02

6 (scale 1-8)

AATCC 16.2 option 1 or 16.3 opt 3

5 (scale 1-5)

Resistencia al deslizamiento de costuras

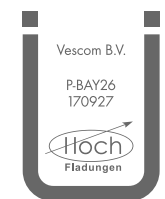
ISO 13936-2

warp 2.5 mm / weft 2.7 mm

ASTM D434

warp 29 lbs / weft 29 lbs

Etiquetas



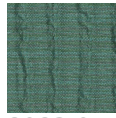
Baustoffklasse schwerentflammbar
DIN 4102, B1

Cuidado & Mantenimiento

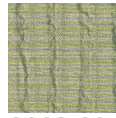


Naltar

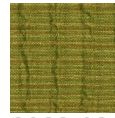
Controlado
8083.01 - 8083.16
Shiribana 70° max -1.4% / weft +1.5%



8083.01



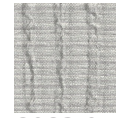
8083.02



8083.03



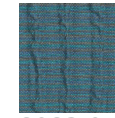
8083.04



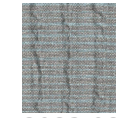
8083.05



8083.06



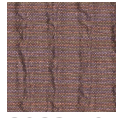
8083.07



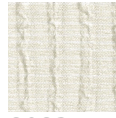
8083.08



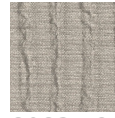
8083.09



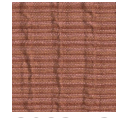
8083.10



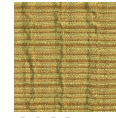
8083.11



8083.12



8083.13



8083.14



8083.15



8083.16