

Moroni

8060.01 - 8060.29



Produit

Tissus pour rideaux

Description

Rideau uni finement tissé, black-out

Composition

100% polyester acrylic coating

Largeur

± 280 cm, ± 110 inches

Poids

± 700 gr/m², ± 23 oz/yd¹

Confort Visuel & Thermique

EN 410/EN 14501

Test available

AATCC 148

Test available

Non feu

NFPA 701 (meth. 1 or 2) , Pass

EN 13773 , Class 1

BS 5867-2 , Type B

NF P 92/503-507 , M1

DIN 4102 , B1

Übereinstimmung , Pass

UNI VF 8456-8457 , Classe 1

CAN/ULC S109 , Pass

IMO 2010 FTP part 7 , Pass

Résistance au frottement

ISO 105-X12

wet 4 (scale 1-5) / dry 4 (scale 1-5)

AATCC 8 (solids)

wet 4.5 (scale 1-5) / dry 4.5 (scale 1-5)

Solidité lumière

ISO 105-B02

5-6 (scale 1-8)

AATCC 16.2 option 1 or 16.3 opt 3

3.5 (scale 1-5)

Résistance au glissement à la couture

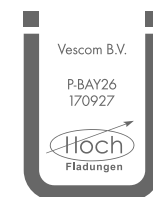
ASTM D434

warp 66 lbs / weft 47 lbs

Étiquettes



USCG -
EU MRA
0038



Baustoffklasse schwerenflammbar
DIN 4102, B1

Entretien & Maintenance



Rétrécissement

Shrinkage 30° - warp -1.6%

Shrinkage 30° - weft -0.6%

Shrinkage 70° - warp -2%

Shrinkage 70° - weft -0.8%

Moroni

8060.01 - 8060.29



8060.01



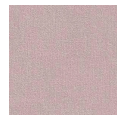
8060.02



8060.03



8060.04



8060.05



8060.06



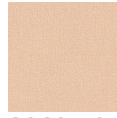
8060.07



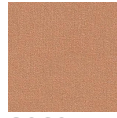
8060.08



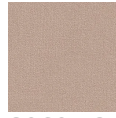
8060.09



8060.10



8060.11



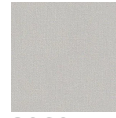
8060.12



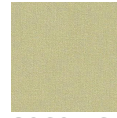
8060.13



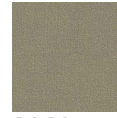
8060.14



8060.15



8060.16



8060.17



8060.19



8060.18



8060.20



8060.21



8060.22



8060.23



8060.24



8060.25



8060.26



8060.27



8060.28



8060.29