

# Moore

7075.01 – 7075.16



产品  
面料

描述

多色编织网格状设计的100%再生材质家具面料

成分

100% recycled polyester FR

宽幅

± 141 cm, ± 56 inches

重量

± 835 gr/m, ± 27 oz/yd<sup>1</sup>

阻燃

EN 1021/1-2, Pass

BS 5852, Crib 5

NF P 92/503-507 or NF D 60-013, M1

DIN 4102, B1

UNI 9175, Classe 1

Cal TB 117-2013, section 1, Pass

IMO 2010 FTP part 8, Pass

NFPA 260, Class 1

耐摩擦褪色

ISO 105 X12

wet 4-5 (scale 1-5) / dry 4-5 (scale 1-5)

AATCC 8

wet 5 (scale 1-5) / dry 5 (scale 1-5)

耐光照褪色

ISO 105 B02

6 (scale 1-8)

AATCC 16.2 opt.1 or 16.3 opt. 3

4.5 (scale 1-5)

耐滑缝

ISO 13936-2

warp 2 mm / weft 2 mm

ASTM D4034

warp 136 lbs / weft 126 lbs

标签



USCG -  
EU MRA  
0038



STANDARD  
100  
521-3365  
Hohenstein HTTI

保养与维护



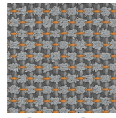
收缩率

Shrinkage 50° warp -1.6% / weft -3%

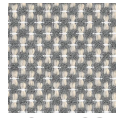
# Moore

7075.01 – 7075.16

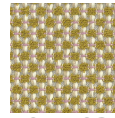
---



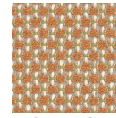
7075.01



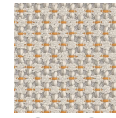
7075.02



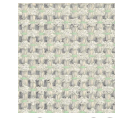
7075.03



7075.04



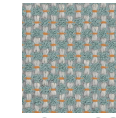
7075.05



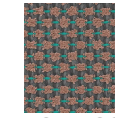
7075.06



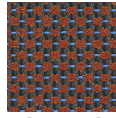
7075.07



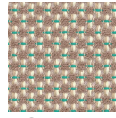
7075.08



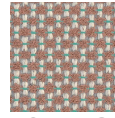
7075.09



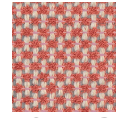
7075.10



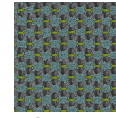
7075.11



7075.12



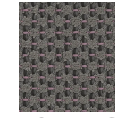
7075.13



7075.14



7075.15



7075.16