

# Moore

7075.01 – 7075.16



## Produto

**Revestimento para mobiliário**

## Descrição

**Tecido para estofos 100% reciclado, com uma grelha gráfica e tátil numa trama multicolorida, em grande escala em 16 cores**

## Composição

**100% recycled polyester FR**

## Largura

**± 141 cm, ± 56 inches**

## Peso

**± 835 gr/m, ± 27 oz/yd<sup>1</sup>**

## Resistência ao fogo

**EN 1021/1-2 , Pass**

**BS 5852 , Crib 5**

**NF P 92/503-507 or NF D 60-013 , M1**

**DIN 4102 , B1**

**UNI 9175 , Classe 1**

**Cal TB 117-2013, section 1 , Pass**

**IMO 2010 FTP part 8 , Pass**

**NFPA 260 , Class 1**

## Resistência à fricção

**ISO 105 X12**

wet 4-5 (scale 1-5) / dry 4-5 (scale 1-5)

**AATCC 8**

wet 5 (scale 1-5) / dry 5 (scale 1-5)

## Resistência à luz

**ISO 105 B02**

6 (scale 1-8)

**AATCC 16.2 opt.1 or 16.3 opt. 3**

4.5 (scale 1-5)

## Resistência ao deslizamento das costuras

**ISO 13936-2**

warp 2 mm / weft 2 mm

**ASTM D4034**

warp 136 lbs / weft 126 lbs

## Marcas de qualidade



USCG -  
EU MRA  
0038



STANDARD  
100  
S21-3365  
Hohenstein HTTI

## Cuidados & Manutenção



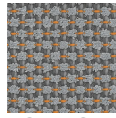
## Encolhimento

Shrinkage 50° warp -1.6% / weft -3%

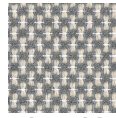
# Moore

7075.01 – 7075.16

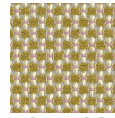
---



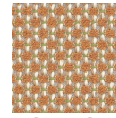
7075.01



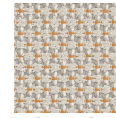
7075.02



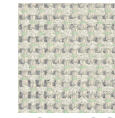
7075.03



7075.04



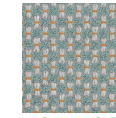
7075.05



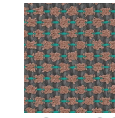
7075.06



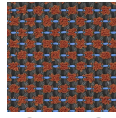
7075.07



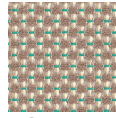
7075.08



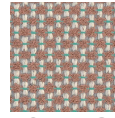
7075.09



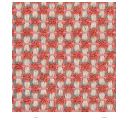
7075.10



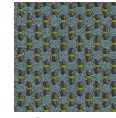
7075.11



7075.12



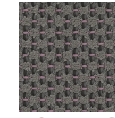
7075.13



7075.14



7075.15



7075.16