

Moore

7075.01 – 7075.16



Produkt

Materiał obiciowy

Opis

Materiał obiciowy pochodzący w 100% z recyklingu z wyczuwalną w dotyku, graficzną siatką o wielkoformatowym, wielobarwnym splocie w 16 wersjach kolorystycznych

Skład

100% recycled polyester FR

Szerokość

± 141 cm, ± 56 inches

Gramatura

± 835 gr/m, ± 27 oz/yd¹

Odporność ogniowa

EN 1021/1-2 , Pass

BS 5852 , Crib 5

NF P 92/503-507 or NF D 60-013 , M1

DIN 4102 , B1

UNI 9175 , Classe 1

Cal TB 117-2013, section 1 , Pass

IMO 2010 FTP part 8 , Pass

NFPA 260 , Class 1

Odporność na wycieranie

ISO 105 X12

wet 4-5 (scale 1-5) / dry 4-5 (scale 1-5)

AATCC 8

wet 5 (scale 1-5) / dry 5 (scale 1-5)

Odporność na działanie światła

ISO 105 B02

6 (scale 1-8)

AATCC 16.2 opt.1 or 16.3 opt. 3

4.5 (scale 1-5)

Wytrzymałość szwów

ISO 13936-2

warp 2 mm / weft 2 mm

ASTM D4034

warp 136 lbs / weft 126 lbs

Etykiety



USCG -
EU MRA
0038



STANDARD
100
S21-3365
Hohenstein HTI

Pielęgnacja & Konserwacja

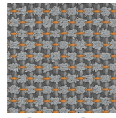


Kurczliwość

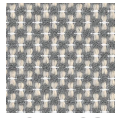
Shrinkage 50° warp -1.6% / weft -3%

Moore

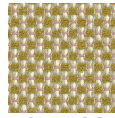
7075.01 – 7075.16



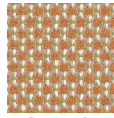
7075.01



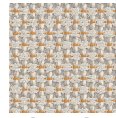
7075.02



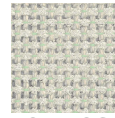
7075.03



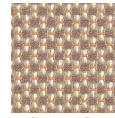
7075.04



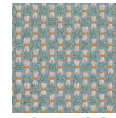
7075.05



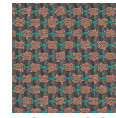
7075.06



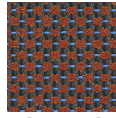
7075.07



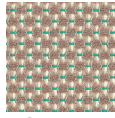
7075.08



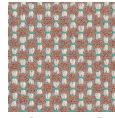
7075.09



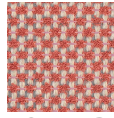
7075.10



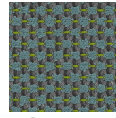
7075.11



7075.12



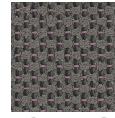
7075.13



7075.14



7075.15



7075.16