

# Moon

1115.01 - 1115.09



Prodotto

**Rivestimenti murali**

Descrizione

**Rivestimento murale in vinile riciclato ispirato a superfici irregolari come pietra e argilla, in tonalità opache, terrose o delicatamente metalliche**

Composizione

**Rivestimento murale vinilico con contenuto riciclato del 13% su un supporto in cotone**

Larghezza

**± 130 cm, ± 51 inches**

Peso

**± 490 gr/m<sup>2</sup>, ± 21 oz/yd<sup>1</sup>**

Resistenza al fuoco

**EN 13501 , B, s2 - d0  
ASTM E84 , Pass, A**

Resistenza alla luce

**ISO 105-B02  
7-8 (scale 1-8)**

Etichette



vinyl <sup>plus</sup>  
COMMITTED TO SUSTAINABLE DEVELOPMENT

CE EN 15102

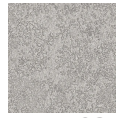
# Moon

1115.01 - 1115.09

---



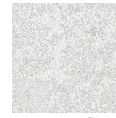
1115.01



1115.02



1115.03



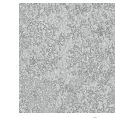
1115.04



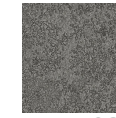
1115.05



1115.06



1115.07



1115.08



1115.09