

Montado

2617.20 - 2617.29



Produto

Revestimento mural

Peso

± 394 gr/m², ± 17 oz/yd¹

Descrição

Estrutura uniforme com efeitos metálicos subtis

Resistência ao fogo

EN 13501 , B, s1 - d0

ASTM E84 , Pass, A

Composição

60% popa de madeira / 40% poliéster sobre um suporte em papel

Marcas de qualidade

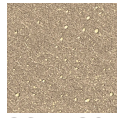
Largura

± 137 cm, ± 54 inches



Montado

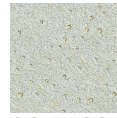
2617.20 - 2617.29



2617.20



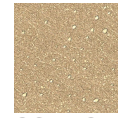
2617.21



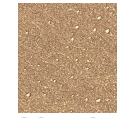
2617.22



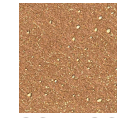
2617.23



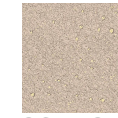
2617.24



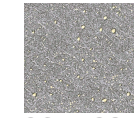
2617.25



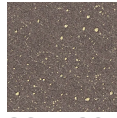
2617.26



2617.27



2617.28



2617.29