

Montado

2617.20 - 2617.29



Produkt

Okleina ścienna

Opis

Struktura na całej powierzchni z subtelnymi metalicznymi efektami

Skład

60% miazga drzewna / 40% poliester na nośniku papierowym

Szerokość

± 137 cm, ± 54 inches

Gramatura

± 394 gr/m², ± 17 oz/yd¹

Odporność ogniowa

EN 13501 , B, s1 - d0

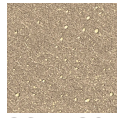
ASTM E84 , Pass, A

Etykiety



Montado

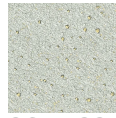
2617.20 - 2617.29



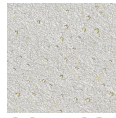
2617.20



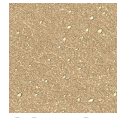
2617.21



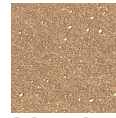
2617.22



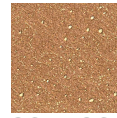
2617.23



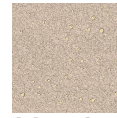
2617.24



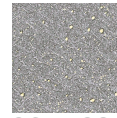
2617.25



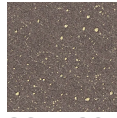
2617.26



2617.27



2617.28



2617.29