

# Montado

2617.20 - 2617.29



Prodotto  
**Rivestimenti murali**

Descrizione  
**Base materica con effetti metallici**

Composizione  
**60% pasta di legno / 40% poliestere su un supporto in carta**

Larghezza  
**± 137 cm, ± 54 inches**

Peso  
**± 394 gr/m<sup>2</sup>, ± 17 oz/yd<sup>1</sup>**

Resistenza al fuoco  
**EN 13501 , B, s1 - d0  
ASTM E84 , Pass, A**

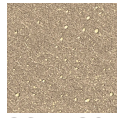
Etichette



# Montado

2617.20 - 2617.29

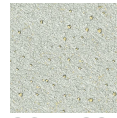
---



2617.20



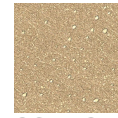
2617.21



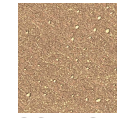
2617.22



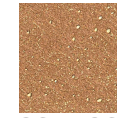
2617.23



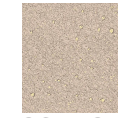
2617.24



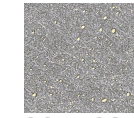
2617.25



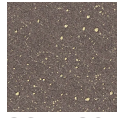
2617.26



2617.27



2617.28



2617.29