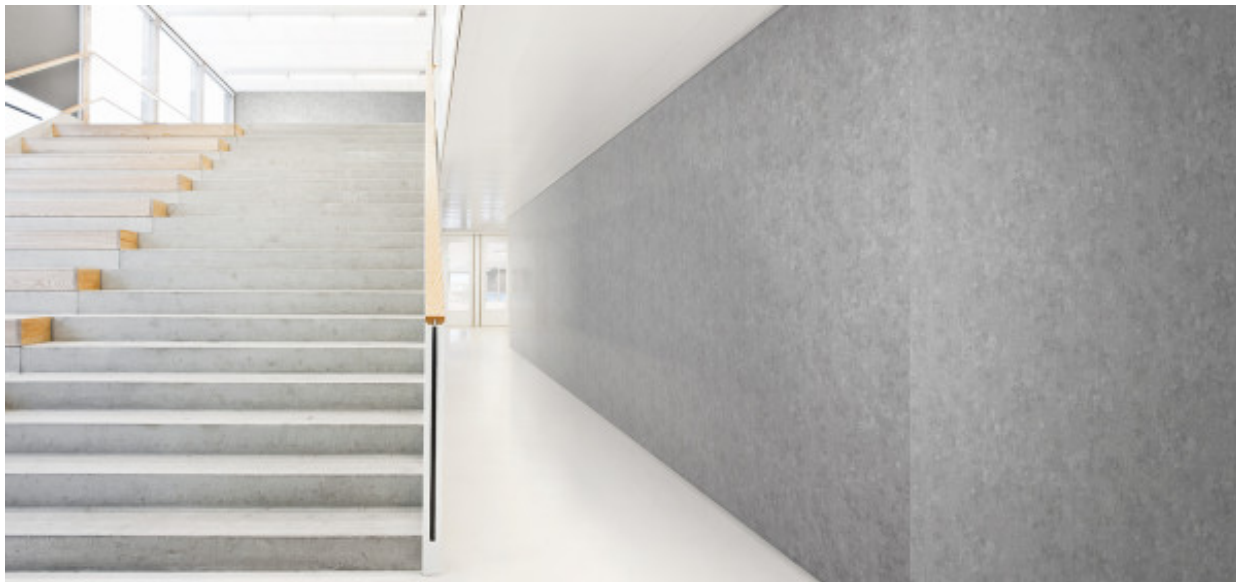


# Melvin

1017.01 - 1017.27



Prodotto  
**Rivestimenti murali**

Descrizione  
**Look cemento**

Composizione  
**Tessuto in puro cotone con spalmatura di monomeri vinilici completamente polimerizzati, stampato con inchiostri a base acquosa**

Larghezza  
**± 130 cm, ± 51/52 inches**

Peso  
**± 350 gr/m<sup>2</sup>, ± 15 oz/yd<sup>1</sup>**

Resistenza al fuoco  
**EN 13501 , B, s1 - d0**  
**ASTM E84 , Pass, A**  
**NFPA 286 , Pass**

Etichette



# Melvin

1017.01 - 1017.27

---



1017.27



1017.01



1017.02



1017.03



1017.04



1017.05



1017.06



1017.07



1017.08



1017.09



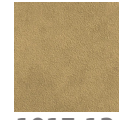
1017.10



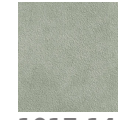
1017.11



1017.12



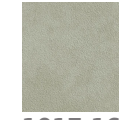
1017.13



1017.14



1017.15



1017.16



1017.17



1017.18



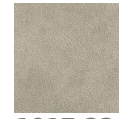
1017.19



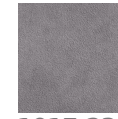
1017.20



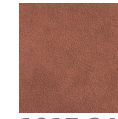
1017.21



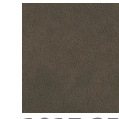
1017.22



1017.23



1017.24



1017.25



1017.26